

ASX RELEASE // 30 JANUARY 2024

# Quarterly Activities Report

Period ending December 2023

MetalsTech Limited

## HIGHLIGHTS

- Sturec Gold Mine, Slovakia, delivers robust Scoping Study for an underground mining operation
- Scoping Study demonstrates pre-tax NPV<sub>8%</sub> of US\$506 million and IRR of 116%
- Minmetals Securities Co., Ltd appointed as strategic advisor to lead discussions and provide advisory services on a potential transaction involving Sturec
- MetalsTech identifies high priority targets at Sauvolles Lithium Project, Quebec in hyperspectral remote sensing survey
- Field exploration commenced targeting high-priority LCT pegmatites at Sauvolles, with multiple fractionated pegmatites identified to date.

---

MetalsTech Limited (ASX: MTC) is pleased to report its exploration activities for the Quarter Ended 31 December 2023.

### Exploration Activities for the Quarter Ended 31 December 2023

#### Sturec Gold Mine, Slovakia

##### Scoping Study

MetalsTech Limited (ASX: MTC) announced the results of a Scoping Study for its Sturec Gold Mine in central Slovakia. The study indicated that the mine had the potential to become a low-cost gold and silver concentrate producer.

The most valuable development option was identified as an underground mining operation with a plant throughput of 2.3 Mtpa and a mine life of 9 years. The operating cost estimate was US\$927/oz AuEq, promising an operating margin of over 200%. The total capital investment required for the operation was estimated at US\$95.41M. The study projected undiscounted free cashflows of US\$706.21M and expected the mine to produce 1,134,000 oz AuEq over the course of the 9-year mine life. The pre-tax NPV<sub>8%</sub> was US\$506M, with an IRR of 116.0%.



The Scoping Study was of high quality, with 78% of the mining inventory based on Measured and Indicated Resources. The After-Tax NPV(8%) was robust at US\$239M, assuming a conservative gold price of US\$1,550 per ounce. More detail is available in the Scoping Study ASX Announcement on 14 November 2023.

### Sturec drilling results

MetalsTech announced promising assay results from both underground and surface drilling at the Sturec Mine. The drilling was aimed at extending the mineralisation of the Sturec Mineral Resource and increasing confidence in this area.

Significant findings included a continuous mineralized zone of 32.0m at 2.07g/t Au and 24.7g/t Ag from 267m in SSD-03, and 35.0m at 1.38g/t Au and 9.5g/t Ag from 86m in UGA-65. Assay results also highlighted findings from UGA-64 and UGA-62, with notable mineralized zones.

The drilling was completed, with results from SDD-04 and SSD-05 still pending at the time. These results underscored MetalsTech's commitment to advancing its resource base and the potential of the Sturec Mine.

### Sauvolles Lithium Project, Canada

MetalsTech is advancing its initial field exploration programme at the Sauvolles Lithium Project in Quebec, Canada. This project, nestled in the James Bay Lithium District, is wholly owned by MTC.

Spanning approximately 300km<sup>2</sup> on the Lac Guyer Greenstone Belt, the project neighbours several other substantial lithium projects. The Sauvolles Lithium Project, which comprises 558 mineral claims, is anticipated to continue yielding further discoveries as MTC's exploration programme progresses.

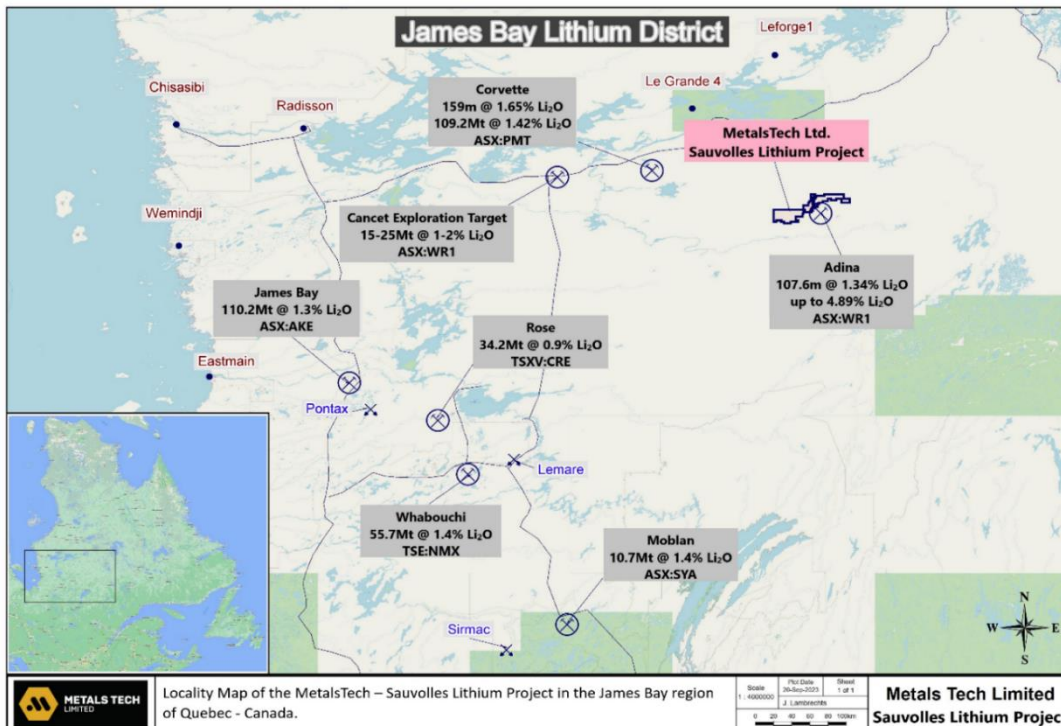


Figure 1: Location of the Sauvolles project in the James Bay Lithium District among major hard-rock lithium deposits



The Company commenced a 12-day field exploration program at Sauvolles, with a technical team from Magnor Exploration Inc. mobilised to undertake detailed mapping, outcrop identification, rock-chip sampling and general prospecting across the highly prospective geology.

There were 11 high-priority targets identified in a hyperspectral remote sensing survey at Sauvolles which identified multiple high-priority exploration targets using known lithium and tantalum occurrences to characterise the spectral signature of potential lithium occurrences within the area. This exploration campaign focused on conducting a thorough field investigation of the high-priority targets that were generated, as well as general mapping of the prospective geology and numerous outcrops which had been identified to date.

The hyperspectral program utilised the chemical signature of the neighbouring Adina Lithium Project (held by ASX: WR1) to map the spectral endmembers to delineate potential targets across the Sauvolles project.

The study aimed to delineate spodumene anomalies that may represent spodumene-bearing pegmatites, which host lithium mineralisation. The remote spectral imagery results provided for the delineated areas to be rapidly assessed in the field to determine if any lithium minerals were present, and if so, to plan and implement exploration programs to define the extent and grade of the mineralisation.

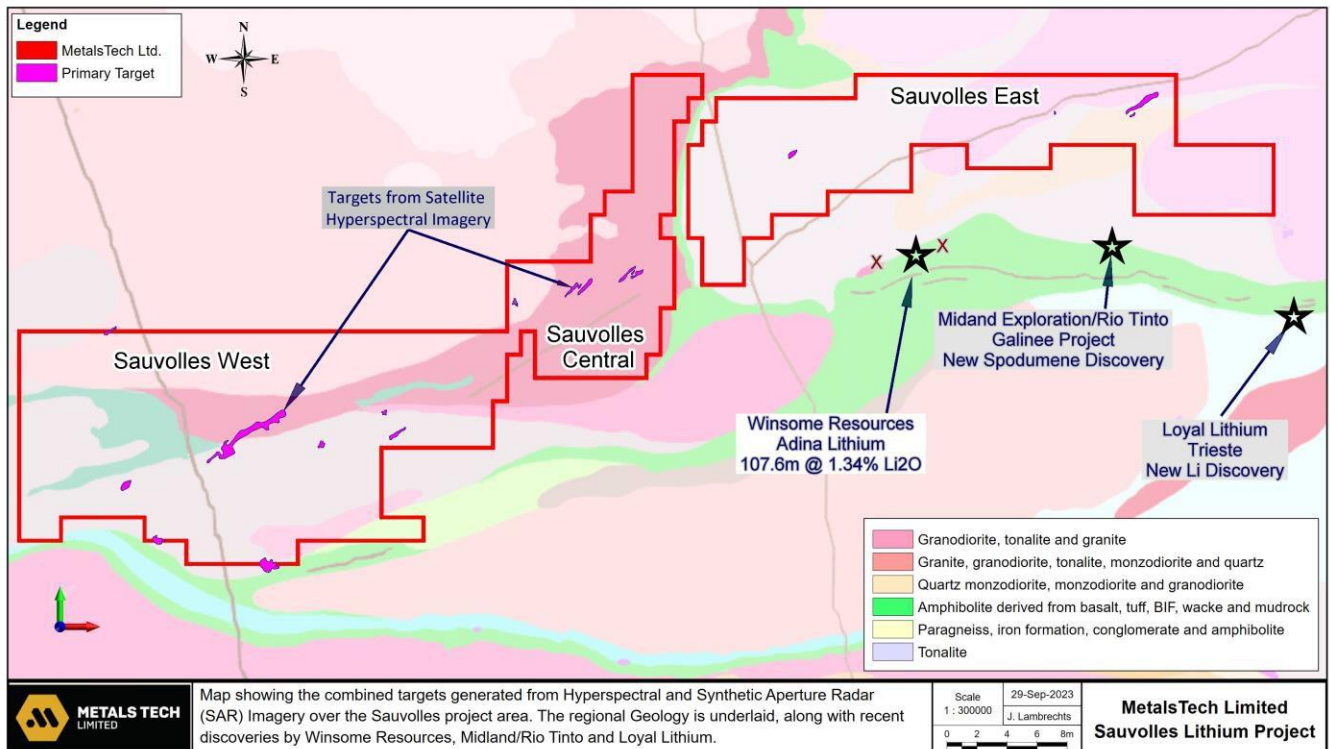


Figure 2: Primary targets map generated from the Hyperspectral Program covering the Sauvolles Lithium Project, Quebec

The hyperspectral analysis was also trained on a multivariate statistical classifier to separate the LWIR signals over 71 drill holes at the Adina Lithium Project (WR1) from the rest of the region. This task combined the LWIR responses most associated with the Li-Ta occurrences in the area. A single “target” map was then generated, identifying areas that best represented the lithium endmember signatures.



The classifier was dominated by spodumene with lepidolite, elbaite and the olivine monticellite, also anomalous. Utilising dielectric constants (DC) as a method to determine resistivity indicated that approximately 97% of the drill holes at the neighbouring Adina project (WR1) had anomalously low DCs as estimated from an ALOS-1 scene.

The Adina project drill holes were also anomalous in H2, a gas which could be measured using Sentinel-2 imagery. These gas estimates could be used to generate exploration targets undercover as the gas could percolate to the surface along cracks and fractures.

The Synthetic Aperture Radar (SAR) targets showed targets based on high resistivity. Resistivity was considered important because quartz was a large component of felsic pegmatites. The best correlated endmember with SAR resistivity was quartz so, broadly speaking, the SAR was mapping quartz pegmatites.

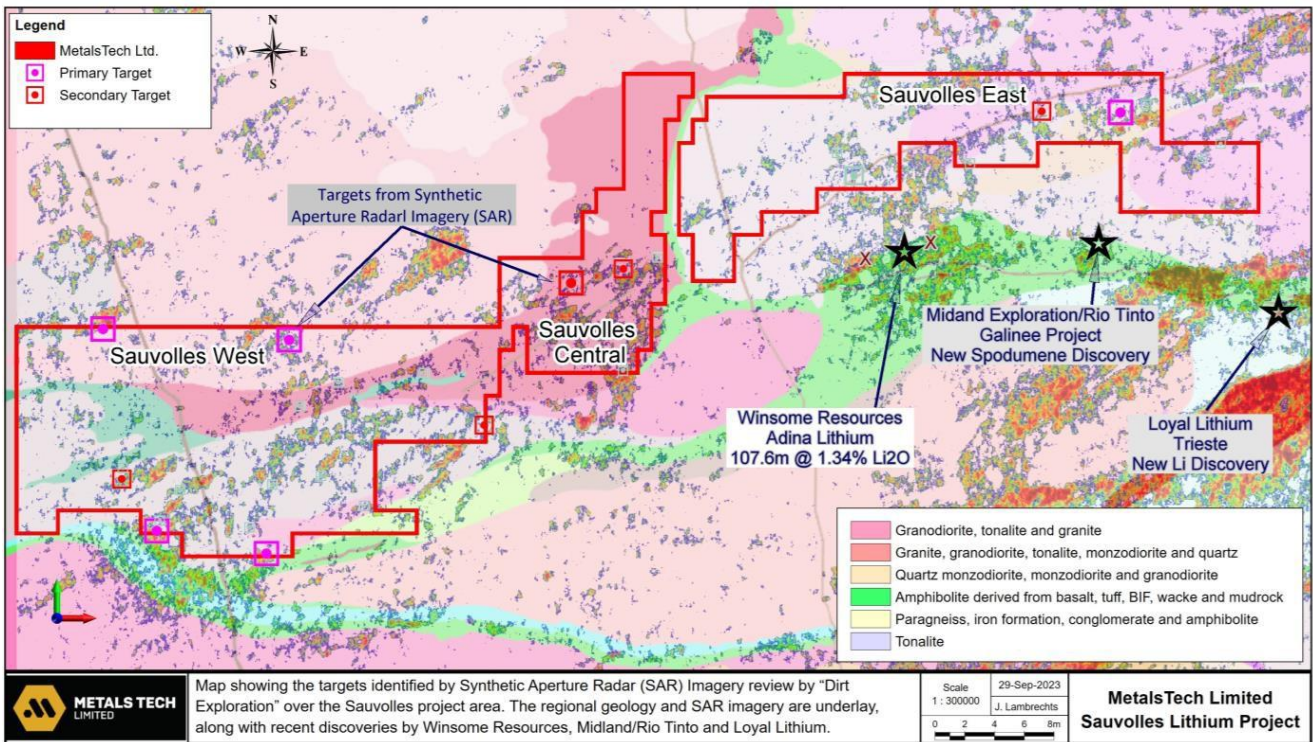
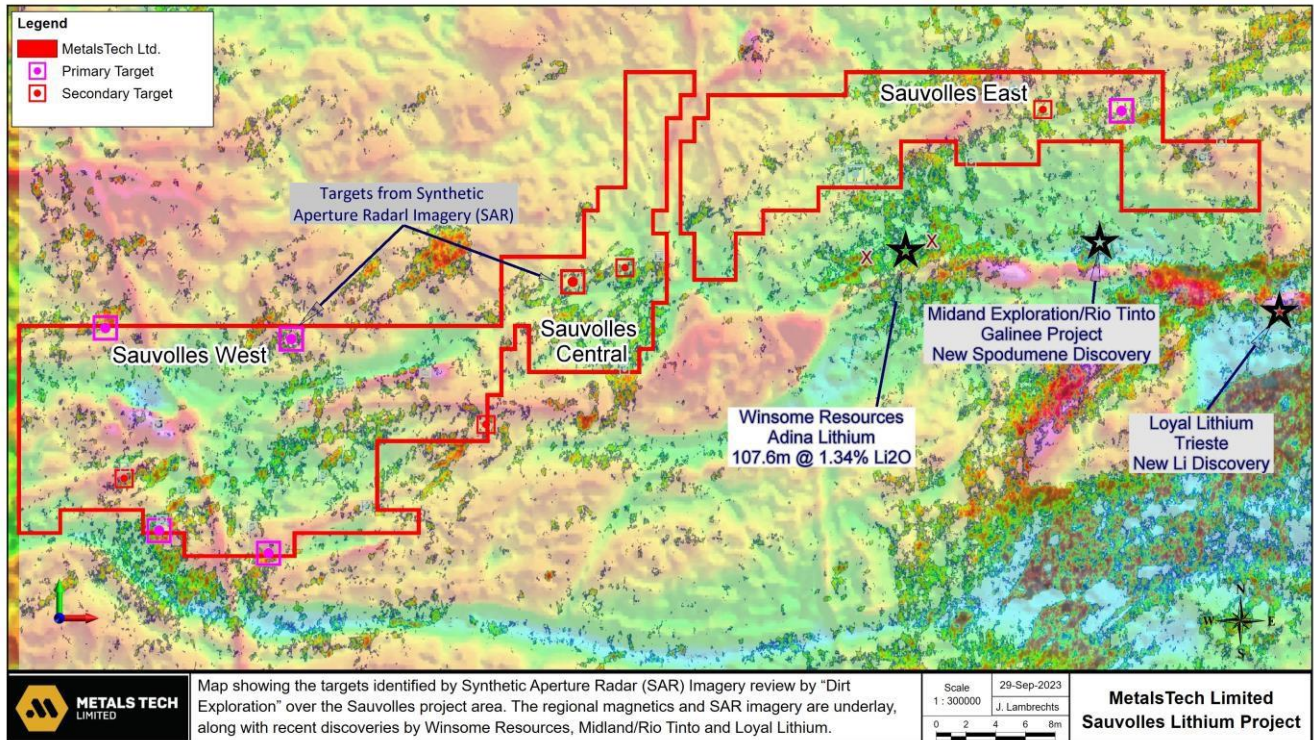


Figure 3: SAR target map generated from the Hyperspectral Program covering the Sauvolles Lithium Project, Quebec and the nearby Adina Project (ASX: WR1) – geological data overlay



The SAR targets overlaid on the magnetic data of the Sauvolles project is outlined in **Figure 4**.



**Figure 4:** SAR target map generated from the Hyperspectral Program covering the Sauvolles Lithium Project, Quebec and the nearby Adina Project (ASX: WR1) - magnetic data overlay

Field crews had systematically worked through the area, mapping the pegmatites and collecting samples for testing. Large mega-crystic feldspars, quartz, epidote, garnets and biotite were mapped across several of the pegmatite floats and outcrops visited. The interpretation of the pegmatite extent and mineralisation was still in its early stages.

Further desktop studies and interpretations of satellite images and historic geophysical maps to assess additional interpreted pegmatites in the area was done. A recently completed hyperspectral program identified multiple high-priority exploration targets. Multiple in-situ mega-crystic pegmatite bodies were mapped across the Sauvolles project within host amphibolite or granite.

Two significant zones of major outcrop were also mapped over more than a 6km strike length, exhibiting REE mineralisation potential. Pegmatites identified to date displayed fractionation indicators and accessory minerals often associated with rare metal pegmatites. Systematic grab sampling, rock sawing and channel sampling continued under the supervision of Magnor.

Several pegmatites had been mapped on the Sauvolles West project area by the Geological Survey of Quebec. Rock samples collected from outcrops showed strong indicator mineralogy along the Lac Guyer Greenstone Belt, including anomalous historical lithium assay results. The lithium was found within a tonalite rock type, 34km along strike west in the same stratigraphic sequence that hosted the Adina Lithium Project (WR1). The samples collected also exhibited highly anomalous pathfinder mineralisation, including tin, tantalum, caesium, and rubidium.



The Sauvolles East project area was also prioritised by the Company. Regional geological interpretation by the Quebec Department of Energy and Natural Resources (MERN) suggested that the project area was mainly underlain by the Joubert Suite, a series of intrusive tonalites and granodiorites. The Joubert Suite intrudes the adjacent greenstones of the Lac Guyer Formation, which hosts the lithium-bearing pegmatite swarms at Adina. Geological work completed by Magnor Exploration Inc. on behalf of the Company indicated potential for the contact with the greenstone belt to lie further north.

The intersection of mineralised pegmatites below the Adina Main Zone (WR1) also gave the Company hope that further pegmatite swarms might be north of Adina. This was supported by gravity targets identified north of the Adina Main Zone. Within the Lac Guyer Greenstone Belt, pegmatites were generally identified along the contact of the magnetic high and the magnetic low, and always inside the greenstone unit.

The Sauvolles project was approximately 3km from the Ridge Zone, Main Zone (Jamar) and Far East Zone that formed the Adina Project, and it bordered WR1's recently acquired Jackpot Property. It was also east and adjacent to the Apollo Lithium Project (LU7), where 17 outcrops were identified as being predominantly pegmatite hosted. The geological sequence of these pegmatite targets was identical to that at the Sauvolles project, with the same rock units extending into the western block of the Sauvolles project.

Given the globally significant results from the neighbouring Adina project (WR1) in addition to a similar geological host, the Sauvolles Lithium Project had the potential to be equally successful. The Adina pegmatites were also hosted by the greenstone belts of the La Grande sub-province. These spodumene pegmatites were hosted by mafic metavolcanic rocks near the pegmatitic granite Vieux Comptoir. The Sauvolles project also featured mafic metavolcanic rocks and pegmatitic granite Vieux Comptoir.

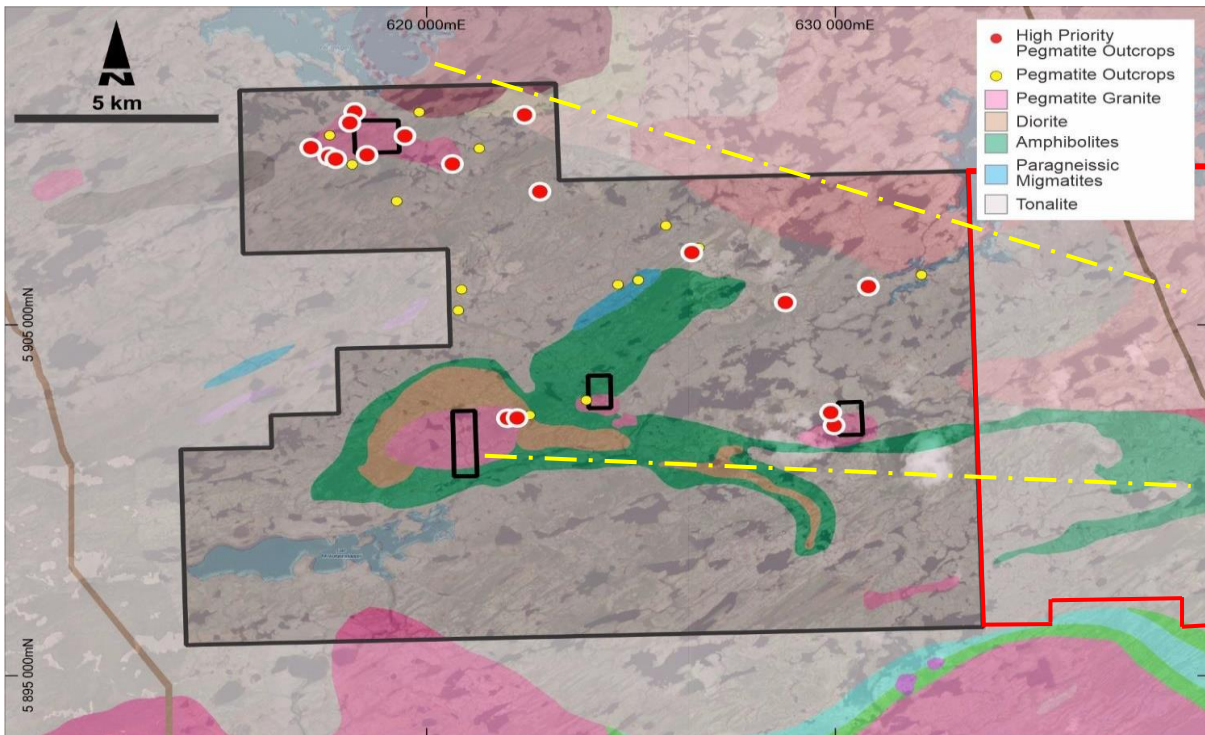


Figure 5: Pegmatite occurrences that had been identified on the neighbouring Apollo Project



The Savolles project geology was made up of Mesoarchean and Neoproterozoic intrusions. The Savolles project exhibited geological and geophysical characteristics like the spodumene pegmatites in the area at Adina. The regional magnetics indicated that both the Adina and Savolles projects were in the greenstone belt of the La Grande sub-province.

The Vieux Comptoir pegmatitic granite intrusions had displayed a high magnetic signature. It was inferred that the high magnetic signature in the tonalite could have been pegmatitic granite rather than the tonalite, as suggested by the geology map. Both the Adina and Savolles projects shared the same medium low gravity signature.

Figure 6 outlined the pegmatite occurrences that had been identified on the neighbouring Apollo Project (LU7). It clearly indicated an extension of the same favourable geology into the western block of the Savolles project.

In addition to the current field exploration program at the Savolles project, MetalsTech had also been compiling all publicly available geological, geochemical, geophysical, and topographic data over the Savolles Lithium Project. Targets generated from these datasets, including those from the recently completed hyperspectral survey, were intended to provide the basis for follow-up and expanded exploration during the current 2023 exploration field season and into the 2024 field exploration season.

The company planned to employ similar methods to those used at neighbouring projects, such as visual identification of pegmatite outcrops, rock chip and soil sampling. These activities might be followed by stripping to better expose key outcrops and channel sampling.

### Corporate Activity

MetalsTech Limited (MTC) engaged Minmetals Securities Co., Ltd as a strategic advisor to facilitate discussions about a potential transaction concerning its wholly-owned Sturec Gold Mine in Slovakia.

Minmetals was overseeing the process involving potential strategic parties from both China and the West, with discussions at various stages. MTC had been managing a detailed data room since early 2023, recently updated with a robust scoping study for the Sturec Gold Mine, which revealed a pre-tax NPV(8) of US\$506 million and a pre-tax IRR of 116.0%.

The release of this study, along with a strengthening gold price, had spurred interest in Sturec. MTC continued to collaborate with major shareholder Chifeng Gold while engaging Minmetals. Although MTC was confident a strategic transaction would occur, no such transaction or offer document had yet been received, and there was no guarantee that any would be received or be acceptable.

Any disposal of the Sturec Gold Mine would require shareholder and ASX approvals. MTC's board believed the current share price did not fairly reflect Sturec's value.



## Appendix 5B Commentary

In Payments to related parties of the entity and their associates (refer to 6.1), the \$85,000 payment refers to the payment of non-executive fees and director consulting fees.

Cash outflows from operating activities for the quarter were \$265,000. Cash outflows from investing activities for the quarter were \$375,000. Cash inflows from financing activities were \$500,000.

Cash and cash equivalents as at 31 December 2023 were \$610,000.

**ENDS**

**This announcement has been authorised by the Board of Directors of MetalsTech Limited.**

For further information please contact

### COMPANY

Gino D'Anna  
DIRECTOR

**P.** +61 400 408 878

**E.** [gino@metalstech.net](mailto:gino@metalstech.net)

### INVESTOR RELATIONS

Nathan Ryan  
INVESTOR RELATIONS

**P.** +61 420 582 887

**E.** [nathan.ryan@nwrcommunications.com.au](mailto:nathan.ryan@nwrcommunications.com.au)

### CAUTION REGARDING FORWARD-LOOKING STATEMENTS

This document contains forward-looking statements concerning MetalsTech. Forward-looking statements are not statements of historical fact and actual events and results may differ materially from those described in the forward-looking statements as a result of a variety of risks, uncertainties and other factors. Forward-looking statements are inherently subject to business, economic, competitive, political and social uncertainties and contingencies. Many factors could cause the Company's actual results to differ materially from those expressed or implied in any forward-looking information provided by the Company, or on behalf of, the Company. Such factors include, among other things, risks relating to additional funding requirements, metal prices, exploration, development and operating risks, competition, production risks, regulatory restrictions, including environmental regulation and liability and potential title disputes.

Forward looking statements in this document are based on the company's beliefs, opinions and estimates of MetalsTech as of the dates the forward-looking statements are made, and no obligation is assumed to update forward looking statements if these beliefs, opinions and estimates should change or to reflect other future developments.





## COMPETENT PERSONS STATEMENT

The information in this announcement that relates to Exploration Results is based on information compiled by Dr Quinton Hills Ph.D., M.Sc., B.Sc. Dr Hills is the technical advisor of MetalsTech Limited and is a member of the Australasian Institute of Mining and Metallurgy (No. 991225). Dr Hills has sufficient experience that is relevant to the style of mineralisation and type of deposit under consideration and to the activity being undertaken to qualify as a Competent Person as defined in the 2012 Edition of the 'Australasian Code for Reporting of Exploration Results, Mineral Resources and Ore Reserves'. Dr Hills consents to the inclusion in the report of the matters based on their information in the form and context in which it appears.

The information in the report to which this statement is attached that relates to Mineral Resources for the Sturec Gold Deposit is based on information compiled by Mr Chris Grove, who is a Member of The Australasian Institute of Mining and Metallurgy (No. 310106). Mr Grove is a full-time employee of Measured Group Pty Ltd and has sufficient experience that is relevant to the style of mineralisation and type of deposit under consideration and to the activity being undertaken to qualify as a Competent Person as defined in the 2012 Edition of the 'Australasian Code for Reporting of Exploration Results, Mineral Resources and Ore Reserves'. Mr Grove consents to the inclusion in the report of the matters based on his information in the form and context in which it appears.



## DESCRIPTION OF THE MINING RIGHTS

### *Slovakian Gold Project*

#### *Sturec Gold Mine*

Tenement ID°	Status	Registration Date	Expiry Date	Area
Sturec Gold Mine – Mining License 1830-3359/2008	Active		Indefinite	9.47 sq km



Sauvolles Lithium Project, Quebec

#	NTS Map Sheet	Row	Column	Area (Ha.)	Title No (CDC)	Expiry Date	Work required to renew	Fees required to renew	Titleholder(s) name and Percentage
1	33H07	4	46	51.54	2685606	31/10/2025 23:59	\$135.00	\$170.00	Glenn Griesbach 100%
2	33H07	5	46	51.53	2685607	31/10/2025 23:59	\$135.00	\$170.00	Glenn Griesbach 100%
3	33H07	5	47	51.53	2685608	31/10/2025 23:59	\$135.00	\$170.00	Glenn Griesbach 100%
4	33H07	6	46	51.52	2685609	31/10/2025 23:59	\$135.00	\$170.00	Glenn Griesbach 100%
5	33H07	6	47	51.52	2685610	31/10/2025 23:59	\$135.00	\$170.00	Glenn Griesbach 100%
6	33H07	6	50	51.52	2685611	31/10/2025 23:59	\$135.00	\$170.00	Glenn Griesbach 100%
7	33H07	6	51	51.52	2685612	31/10/2025 23:59	\$135.00	\$170.00	Glenn Griesbach 100%
8	33H07	6	52	51.52	2685613	31/10/2025 23:59	\$135.00	\$170.00	Glenn Griesbach 100%
9	33H07	7	47	51.51	2685614	31/10/2025 23:59	\$135.00	\$170.00	Glenn Griesbach 100%
10	33H07	7	50	51.51	2685615	31/10/2025 23:59	\$135.00	\$170.00	Glenn Griesbach 100%
11	33H07	7	51	51.51	2685616	31/10/2025 23:59	\$135.00	\$170.00	Glenn Griesbach 100%
12	33H07	7	52	51.51	2685617	31/10/2025 23:59	\$135.00	\$170.00	Glenn Griesbach 100%
13	33H07	10	52	51.48	2685810	1/11/2025 23:59	\$135.00	\$170.00	Glenn Griesbach 100%
14	33H07	10	53	51.48	2685811	1/11/2025 23:59	\$135.00	\$170.00	Glenn Griesbach 100%
15	33H07	10	54	51.48	2685812	1/11/2025 23:59	\$135.00	\$170.00	Glenn Griesbach 100%
16	33H07	11	52	51.47	2685813	1/11/2025 23:59	\$135.00	\$170.00	Glenn Griesbach 100%
17	33H07	12	52	51.46	2685814	1/11/2025 23:59	\$135.00	\$170.00	Glenn Griesbach 100%
18	33H07	13	52	51.45	2685815	1/11/2025 23:59	\$135.00	\$170.00	Glenn Griesbach 100%
19	33H02	27	1	51.60	2686333	2/11/2025 23:59	\$135.00	\$170.00	Glenn Griesbach 100%
20	33H02	27	2	51.60	2686334	2/11/2025 23:59	\$135.00	\$170.00	Glenn Griesbach 100%
21	33H02	27	3	51.60	2686335	2/11/2025 23:59	\$135.00	\$170.00	Glenn Griesbach 100%
22	33H02	27	4	51.60	2686336	2/11/2025 23:59	\$135.00	\$170.00	Glenn Griesbach 100%
23	33H02	27	5	51.60	2686337	2/11/2025 23:59	\$135.00	\$170.00	Glenn Griesbach 100%
24	33H02	27	6	51.60	2686338	2/11/2025 23:59	\$135.00	\$170.00	Glenn Griesbach 100%
25	33H02	27	7	51.60	2686339	2/11/2025 23:59	\$135.00	\$170.00	Glenn Griesbach 100%
26	33H02	27	8	51.60	2686340	2/11/2025 23:59	\$135.00	\$170.00	Glenn Griesbach 100%
27	33H02	28	5	51.59	2686341	2/11/2025 23:59	\$135.00	\$170.00	Glenn Griesbach 100%
28	33H02	28	6	51.59	2686342	2/11/2025 23:59	\$135.00	\$170.00	Glenn Griesbach 100%
29	33H02	28	7	51.59	2686343	2/11/2025 23:59	\$135.00	\$170.00	Glenn Griesbach 100%
30	33H02	28	8	51.59	2686344	2/11/2025 23:59	\$135.00	\$170.00	Glenn Griesbach 100%
31	33H02	28	9	51.59	2686345	2/11/2025 23:59	\$135.00	\$170.00	Glenn Griesbach 100%
32	33H02	28	10	51.60	2686346	2/11/2025 23:59	\$135.00	\$170.00	Glenn Griesbach 100%
33	33H02	28	11	51.60	2686347	2/11/2025 23:59	\$135.00	\$170.00	Glenn Griesbach 100%
34	33H02	28	12	51.60	2686348	2/11/2025 23:59	\$135.00	\$170.00	Glenn Griesbach 100%
35	33H02	28	13	51.60	2686349	2/11/2025 23:59	\$135.00	\$170.00	Glenn Griesbach 100%



#	NTS Map Sheet	Row	Column	Area (Ha.)	Title No (CDC)	Expiry Date	Work required to renew	Fees required to renew	Titleholder(s) name and Percentage
36	33H02	28	14	51.60	2686350	2/11/2025 23:59	\$135.00	\$170.00	Glenn Griesbach 100%
37	33H02	29	5	51.58	2686351	2/11/2025 23:59	\$135.00	\$170.00	Glenn Griesbach 100%
38	33H02	29	6	51.58	2686352	2/11/2025 23:59	\$135.00	\$170.00	Glenn Griesbach 100%
39	33H02	29	7	51.58	2686353	2/11/2025 23:59	\$135.00	\$170.00	Glenn Griesbach 100%
40	33H02	29	8	51.58	2686354	2/11/2025 23:59	\$135.00	\$170.00	Glenn Griesbach 100%
41	33H02	29	9	51.58	2686355	2/11/2025 23:59	\$135.00	\$170.00	Glenn Griesbach 100%
42	33H02	29	10	51.59	2686356	2/11/2025 23:59	\$135.00	\$170.00	Glenn Griesbach 100%
43	33H02	29	11	51.59	2686357	2/11/2025 23:59	\$135.00	\$170.00	Glenn Griesbach 100%
44	33H02	29	12	51.59	2686358	2/11/2025 23:59	\$135.00	\$170.00	Glenn Griesbach 100%
45	33H02	29	13	51.59	2686359	2/11/2025 23:59	\$135.00	\$170.00	Glenn Griesbach 100%
46	33H02	29	14	51.59	2686360	2/11/2025 23:59	\$135.00	\$170.00	Glenn Griesbach 100%
47	33H02	30	5	51.57	2686361	2/11/2025 23:59	\$135.00	\$170.00	Glenn Griesbach 100%
48	33H02	30	6	51.57	2686362	2/11/2025 23:59	\$135.00	\$170.00	Glenn Griesbach 100%
49	33H02	30	7	51.57	2686363	2/11/2025 23:59	\$135.00	\$170.00	Glenn Griesbach 100%
50	33H02	30	8	51.57	2686364	2/11/2025 23:59	\$135.00	\$170.00	Glenn Griesbach 100%
51	33H02	30	9	51.57	2686365	2/11/2025 23:59	\$135.00	\$170.00	Glenn Griesbach 100%
52	33H02	30	10	51.58	2686366	2/11/2025 23:59	\$135.00	\$170.00	Glenn Griesbach 100%
53	33H02	30	11	51.58	2686367	2/11/2025 23:59	\$135.00	\$170.00	Glenn Griesbach 100%
54	33H02	30	12	51.58	2686368	2/11/2025 23:59	\$135.00	\$170.00	Glenn Griesbach 100%
55	33H02	30	24	51.58	2686369	2/11/2025 23:59	\$135.00	\$170.00	Glenn Griesbach 100%
56	33H02	30	25	51.58	2686370	2/11/2025 23:59	\$135.00	\$170.00	Glenn Griesbach 100%
57	33H02	30	26	51.58	2686371	2/11/2025 23:59	\$135.00	\$170.00	Glenn Griesbach 100%
58	33H07	1	1	51.56	2686372	2/11/2025 23:59	\$135.00	\$170.00	Glenn Griesbach 100%
59	33H07	1	2	51.56	2686373	2/11/2025 23:59	\$135.00	\$170.00	Glenn Griesbach 100%
60	33H07	1	3	51.56	2686374	2/11/2025 23:59	\$135.00	\$170.00	Glenn Griesbach 100%
61	33H07	1	4	51.56	2686375	2/11/2025 23:59	\$135.00	\$170.00	Glenn Griesbach 100%
62	33H07	1	5	51.56	2686376	2/11/2025 23:59	\$135.00	\$170.00	Glenn Griesbach 100%
63	33H07	1	6	51.56	2686377	2/11/2025 23:59	\$135.00	\$170.00	Glenn Griesbach 100%
64	33H07	1	7	51.56	2686378	2/11/2025 23:59	\$135.00	\$170.00	Glenn Griesbach 100%
65	33H07	1	8	51.56	2686379	2/11/2025 23:59	\$135.00	\$170.00	Glenn Griesbach 100%
66	33H07	1	9	51.57	2686380	2/11/2025 23:59	\$135.00	\$170.00	Glenn Griesbach 100%
67	33H07	1	10	51.57	2686381	2/11/2025 23:59	\$135.00	\$170.00	Glenn Griesbach 100%
68	33H07	1	11	51.57	2686382	2/11/2025 23:59	\$135.00	\$170.00	Glenn Griesbach 100%
69	33H07	1	24	51.57	2686383	2/11/2025 23:59	\$135.00	\$170.00	Glenn Griesbach 100%
70	33H07	1	25	51.57	2686384	2/11/2025 23:59	\$135.00	\$170.00	Glenn Griesbach 100%
71	33H07	1	26	51.57	2686385	2/11/2025 23:59	\$135.00	\$170.00	Glenn Griesbach 100%
72	33H07	1	27	51.57	2686386	2/11/2025 23:59	\$135.00	\$170.00	Glenn Griesbach 100%



#	NTS Map Sheet	Row	Column	Area (Ha.)	Title No (CDC)	Expiry Date	Work required to renew	Fees required to renew	Titleholder(s) name and Percentage
73	33H07	1	28	51.57	2686387	2/11/2025 23:59	\$135.00	\$170.00	Glenn Griesbach 100%
74	33H07	1	29	51.57	2686388	2/11/2025 23:59	\$135.00	\$170.00	Glenn Griesbach 100%
75	33H07	1	30	51.57	2686389	2/11/2025 23:59	\$135.00	\$170.00	Glenn Griesbach 100%
76	33H07	1	31	51.57	2686390	2/11/2025 23:59	\$135.00	\$170.00	Glenn Griesbach 100%
77	33H07	1	32	51.57	2686391	2/11/2025 23:59	\$135.00	\$170.00	Glenn Griesbach 100%
78	33H07	1	33	51.57	2686392	2/11/2025 23:59	\$135.00	\$170.00	Glenn Griesbach 100%
79	33H07	1	34	51.57	2686393	2/11/2025 23:59	\$135.00	\$170.00	Glenn Griesbach 100%
80	33H07	2	32	51.56	2686394	2/11/2025 23:59	\$135.00	\$170.00	Glenn Griesbach 100%
81	33H07	2	33	51.56	2686395	2/11/2025 23:59	\$135.00	\$170.00	Glenn Griesbach 100%
82	33H07	2	34	51.56	2686396	2/11/2025 23:59	\$135.00	\$170.00	Glenn Griesbach 100%
83	33H07	1	35	51.57	2686403	2/11/2025 23:59	\$135.00	\$170.00	Glenn Griesbach 100%
84	33H07	2	35	51.56	2686404	2/11/2025 23:59	\$135.00	\$170.00	Glenn Griesbach 100%
85	33H07	2	38	51.56	2686405	2/11/2025 23:59	\$135.00	\$170.00	Glenn Griesbach 100%
86	33H07	2	39	51.56	2686406	2/11/2025 23:59	\$135.00	\$170.00	Glenn Griesbach 100%
87	33H07	2	40	51.56	2686407	2/11/2025 23:59	\$135.00	\$170.00	Glenn Griesbach 100%
88	33H07	2	41	51.56	2686408	2/11/2025 23:59	\$135.00	\$170.00	Glenn Griesbach 100%
89	33H07	2	42	51.56	2686409	2/11/2025 23:59	\$135.00	\$170.00	Glenn Griesbach 100%
90	33H07	2	43	51.56	2686410	2/11/2025 23:59	\$135.00	\$170.00	Glenn Griesbach 100%
91	33H07	2	44	51.56	2686411	2/11/2025 23:59	\$135.00	\$170.00	Glenn Griesbach 100%
92	33H07	2	45	51.56	2686412	2/11/2025 23:59	\$135.00	\$170.00	Glenn Griesbach 100%
93	33H07	3	45	51.55	2686413	2/11/2025 23:59	\$135.00	\$170.00	Glenn Griesbach 100%
94	33H07	3	46	51.55	2686414	2/11/2025 23:59	\$135.00	\$170.00	Glenn Griesbach 100%
95	33H07	9	47	51.49	2686415	2/11/2025 23:59	\$135.00	\$170.00	Glenn Griesbach 100%
96	33H07	10	47	51.48	2686416	2/11/2025 23:59	\$135.00	\$170.00	Glenn Griesbach 100%
97	33H07	11	47	51.47	2686417	2/11/2025 23:59	\$135.00	\$170.00	Glenn Griesbach 100%
98	33H02	28	1	51.59	2686433	2/11/2025 23:59	\$135.00	\$170.00	Junita Tedy Asihto 100%
99	33H02	28	2	51.59	2686434	2/11/2025 23:59	\$135.00	\$170.00	Junita Tedy Asihto 100%
100	33H02	28	3	51.59	2686435	2/11/2025 23:59	\$135.00	\$170.00	Junita Tedy Asihto 100%
101	33H02	28	4	51.59	2686436	2/11/2025 23:59	\$135.00	\$170.00	Junita Tedy Asihto 100%
102	33H02	29	1	51.58	2686437	2/11/2025 23:59	\$135.00	\$170.00	Junita Tedy Asihto 100%
103	33H02	29	2	51.58	2686438	2/11/2025 23:59	\$135.00	\$170.00	Junita Tedy Asihto 100%
104	33H02	29	3	51.58	2686439	2/11/2025 23:59	\$135.00	\$170.00	Junita Tedy Asihto 100%
105	33H02	29	4	51.58	2686440	2/11/2025 23:59	\$135.00	\$170.00	Junita Tedy Asihto 100%
106	33H02	30	1	51.57	2686441	2/11/2025 23:59	\$135.00	\$170.00	Junita Tedy Asihto 100%
107	33H02	30	2	51.57	2686442	2/11/2025 23:59	\$135.00	\$170.00	Junita Tedy Asihto 100%
108	33H02	30	3	51.57	2686443	2/11/2025 23:59	\$135.00	\$170.00	Junita Tedy Asihto 100%
109	33H02	30	4	51.57	2686444	2/11/2025 23:59	\$135.00	\$170.00	Junita Tedy Asihto 100%



#	NTS Map Sheet	Row	Column	Area (Ha.)	Title No (CDC)	Expiry Date	Work required to renew	Fees required to renew	Titleholder(s) name and Percentage
110	33H02	30	13	51.58	2686445	2/11/2025 23:59	\$135.00	\$170.00	Junita Tedy Asihto 100%
111	33H02	30	14	51.58	2686446	2/11/2025 23:59	\$135.00	\$170.00	Junita Tedy Asihto 100%
112	33H02	30	15	51.58	2686447	2/11/2025 23:59	\$135.00	\$170.00	Junita Tedy Asihto 100%
113	33H02	30	16	51.58	2686448	2/11/2025 23:59	\$135.00	\$170.00	Junita Tedy Asihto 100%
114	33H02	30	17	51.58	2686449	2/11/2025 23:59	\$135.00	\$170.00	Junita Tedy Asihto 100%
115	33H02	30	18	51.58	2686450	2/11/2025 23:59	\$135.00	\$170.00	Junita Tedy Asihto 100%
116	33H02	30	19	51.58	2686451	2/11/2025 23:59	\$135.00	\$170.00	Junita Tedy Asihto 100%
117	33H02	30	20	51.58	2686452	2/11/2025 23:59	\$135.00	\$170.00	Junita Tedy Asihto 100%
118	33H02	30	21	51.58	2686453	2/11/2025 23:59	\$135.00	\$170.00	Junita Tedy Asihto 100%
119	33H02	30	22	51.58	2686454	2/11/2025 23:59	\$135.00	\$170.00	Junita Tedy Asihto 100%
120	33H02	30	23	51.58	2686455	2/11/2025 23:59	\$135.00	\$170.00	Junita Tedy Asihto 100%
121	33H07	7	46	51.51	2686456	2/11/2025 23:59	\$135.00	\$170.00	Junita Tedy Asihto 100%
122	33H07	8	46	51.50	2686457	2/11/2025 23:59	\$135.00	\$170.00	Junita Tedy Asihto 100%
123	33H07	9	46	51.49	2686458	2/11/2025 23:59	\$135.00	\$170.00	Junita Tedy Asihto 100%
124	33H07	10	46	51.48	2686459	2/11/2025 23:59	\$135.00	\$170.00	Junita Tedy Asihto 100%
125	33H07	10	55	51.49	2686460	2/11/2025 23:59	\$135.00	\$170.00	Junita Tedy Asihto 100%
126	33H07	10	56	51.49	2686461	2/11/2025 23:59	\$135.00	\$170.00	Junita Tedy Asihto 100%
127	33H07	10	57	51.49	2686462	2/11/2025 23:59	\$135.00	\$170.00	Junita Tedy Asihto 100%
128	33H07	10	58	51.49	2686463	2/11/2025 23:59	\$135.00	\$170.00	Junita Tedy Asihto 100%
129	33H07	10	59	51.49	2686464	2/11/2025 23:59	\$135.00	\$170.00	Junita Tedy Asihto 100%
130	33H07	10	60	51.49	2686465	2/11/2025 23:59	\$135.00	\$170.00	Junita Tedy Asihto 100%
131	33H07	11	46	51.47	2686466	2/11/2025 23:59	\$135.00	\$170.00	Junita Tedy Asihto 100%
132	33H07	11	53	51.47	2686467	2/11/2025 23:59	\$135.00	\$170.00	Junita Tedy Asihto 100%
133	33H07	11	54	51.47	2686468	2/11/2025 23:59	\$135.00	\$170.00	Junita Tedy Asihto 100%
134	33H07	11	55	51.48	2686469	2/11/2025 23:59	\$135.00	\$170.00	Junita Tedy Asihto 100%
135	33H07	11	56	51.48	2686470	2/11/2025 23:59	\$135.00	\$170.00	Junita Tedy Asihto 100%
136	33H07	11	57	51.48	2686471	2/11/2025 23:59	\$135.00	\$170.00	Junita Tedy Asihto 100%
137	33H07	11	58	51.48	2686472	2/11/2025 23:59	\$135.00	\$170.00	Junita Tedy Asihto 100%
138	33H07	11	59	51.48	2686473	2/11/2025 23:59	\$135.00	\$170.00	Junita Tedy Asihto 100%
139	33H07	11	60	51.48	2686474	2/11/2025 23:59	\$135.00	\$170.00	Junita Tedy Asihto 100%
140	33H08	10	1	51.49	2686475	2/11/2025 23:59	\$135.00	\$170.00	Junita Tedy Asihto 100%
141	33H08	10	2	51.49	2686476	2/11/2025 23:59	\$135.00	\$170.00	Junita Tedy Asihto 100%
142	33H08	10	3	51.49	2686477	2/11/2025 23:59	\$135.00	\$170.00	Junita Tedy Asihto 100%
143	33H08	10	4	51.49	2686478	2/11/2025 23:59	\$135.00	\$170.00	Junita Tedy Asihto 100%
144	33H07	12	53	51.46	2686697	4/11/2025 23:59	\$135.00	\$170.00	Glenn Griesbach 100%
145	33H07	12	54	51.46	2686698	4/11/2025 23:59	\$135.00	\$170.00	Glenn Griesbach 100%
146	33H07	12	55	51.47	2686699	4/11/2025 23:59	\$135.00	\$170.00	Glenn Griesbach 100%



#	NTS Map Sheet	Row	Column	Area (Ha.)	Title No (CDC)	Expiry Date	Work required to renew	Fees required to renew	Titleholder(s) name and Percentage
147	33H07	12	56	51.47	2686700	4/11/2025 23:59	\$135.00	\$170.00	Glenn Griesbach 100%
148	33H07	12	57	51.47	2686701	4/11/2025 23:59	\$135.00	\$170.00	Glenn Griesbach 100%
149	33H07	12	58	51.47	2686702	4/11/2025 23:59	\$135.00	\$170.00	Glenn Griesbach 100%
150	33H07	12	59	51.47	2686703	4/11/2025 23:59	\$135.00	\$170.00	Glenn Griesbach 100%
151	33H07	12	60	51.47	2686704	4/11/2025 23:59	\$135.00	\$170.00	Glenn Griesbach 100%
152	33H07	13	53	51.45	2686705	4/11/2025 23:59	\$135.00	\$170.00	Glenn Griesbach 100%
153	33H07	13	54	51.45	2686706	4/11/2025 23:59	\$135.00	\$170.00	Glenn Griesbach 100%
154	33H07	13	55	51.46	2686707	4/11/2025 23:59	\$135.00	\$170.00	Glenn Griesbach 100%
155	33H07	13	56	51.46	2686708	4/11/2025 23:59	\$135.00	\$170.00	Glenn Griesbach 100%
156	33H07	13	57	51.46	2686709	4/11/2025 23:59	\$135.00	\$170.00	Glenn Griesbach 100%
157	33H07	13	58	51.46	2686710	4/11/2025 23:59	\$135.00	\$170.00	Glenn Griesbach 100%
158	33H07	13	59	51.46	2686711	4/11/2025 23:59	\$135.00	\$170.00	Glenn Griesbach 100%
159	33H07	13	60	51.46	2686712	4/11/2025 23:59	\$135.00	\$170.00	Glenn Griesbach 100%
160	33H08	11	1	51.48	2686713	4/11/2025 23:59	\$135.00	\$170.00	Glenn Griesbach 100%
161	33H08	11	2	51.48	2686714	4/11/2025 23:59	\$135.00	\$170.00	Glenn Griesbach 100%
162	33H08	11	3	51.48	2686715	4/11/2025 23:59	\$135.00	\$170.00	Glenn Griesbach 100%
163	33H08	11	4	51.48	2686716	4/11/2025 23:59	\$135.00	\$170.00	Glenn Griesbach 100%
164	33H08	11	9	51.48	2686717	4/11/2025 23:59	\$135.00	\$170.00	Glenn Griesbach 100%
165	33H08	11	10	51.48	2686718	4/11/2025 23:59	\$135.00	\$170.00	Glenn Griesbach 100%
166	33H08	11	11	51.48	2686719	4/11/2025 23:59	\$135.00	\$170.00	Glenn Griesbach 100%
167	33H08	11	12	51.48	2686720	4/11/2025 23:59	\$135.00	\$170.00	Glenn Griesbach 100%
168	33H08	11	13	51.48	2686721	4/11/2025 23:59	\$135.00	\$170.00	Glenn Griesbach 100%
169	33H08	11	14	51.48	2686722	4/11/2025 23:59	\$135.00	\$170.00	Glenn Griesbach 100%
170	33H08	12	1	51.47	2686723	4/11/2025 23:59	\$135.00	\$170.00	Glenn Griesbach 100%
171	33H08	12	2	51.47	2686724	4/11/2025 23:59	\$135.00	\$170.00	Glenn Griesbach 100%
172	33H08	12	3	51.47	2686725	4/11/2025 23:59	\$135.00	\$170.00	Glenn Griesbach 100%
173	33H08	12	4	51.47	2686726	4/11/2025 23:59	\$135.00	\$170.00	Glenn Griesbach 100%
174	33H08	12	5	51.47	2686727	4/11/2025 23:59	\$135.00	\$170.00	Glenn Griesbach 100%
175	33H08	12	6	51.47	2686728	4/11/2025 23:59	\$135.00	\$170.00	Glenn Griesbach 100%
176	33H08	12	7	51.47	2686729	4/11/2025 23:59	\$135.00	\$170.00	Glenn Griesbach 100%
177	33H08	12	8	51.47	2686730	4/11/2025 23:59	\$135.00	\$170.00	Glenn Griesbach 100%
178	33H08	12	9	51.47	2686731	4/11/2025 23:59	\$135.00	\$170.00	Glenn Griesbach 100%
179	33H08	12	10	51.47	2686732	4/11/2025 23:59	\$135.00	\$170.00	Glenn Griesbach 100%
180	33H08	12	11	51.47	2686733	4/11/2025 23:59	\$135.00	\$170.00	Glenn Griesbach 100%
181	33H08	12	12	51.47	2686734	4/11/2025 23:59	\$135.00	\$170.00	Glenn Griesbach 100%
182	33H08	12	13	51.47	2686735	4/11/2025 23:59	\$135.00	\$170.00	Glenn Griesbach 100%
183	33H08	13	1	51.46	2686736	4/11/2025 23:59	\$135.00	\$170.00	Glenn Griesbach 100%



#	NTS Map Sheet	Row	Column	Area (Ha.)	Title No (CDC)	Expiry Date	Work required to renew	Fees required to renew	Titleholder(s) name and Percentage
184	33H08	13	2	51.46	2686737	4/11/2025 23:59	\$135.00	\$170.00	Glenn Griesbach 100%
185	33H08	13	3	51.46	2686738	4/11/2025 23:59	\$135.00	\$170.00	Glenn Griesbach 100%
186	33H08	13	4	51.46	2686739	4/11/2025 23:59	\$135.00	\$170.00	Glenn Griesbach 100%
187	33H08	13	5	51.46	2686740	4/11/2025 23:59	\$135.00	\$170.00	Glenn Griesbach 100%
188	33H08	13	6	51.46	2686741	4/11/2025 23:59	\$135.00	\$170.00	Glenn Griesbach 100%
189	33H08	13	7	51.46	2686742	4/11/2025 23:59	\$135.00	\$170.00	Glenn Griesbach 100%
190	33H08	13	8	51.46	2686743	4/11/2025 23:59	\$135.00	\$170.00	Glenn Griesbach 100%
191	33H08	13	9	51.46	2686744	4/11/2025 23:59	\$135.00	\$170.00	Glenn Griesbach 100%
192	33H08	13	10	51.46	2686745	4/11/2025 23:59	\$135.00	\$170.00	Glenn Griesbach 100%
193	33H08	13	11	51.46	2686746	4/11/2025 23:59	\$135.00	\$170.00	Glenn Griesbach 100%
194	33H08	13	12	51.46	2686747	4/11/2025 23:59	\$135.00	\$170.00	Glenn Griesbach 100%
195	33H08	13	13	51.46	2686748	4/11/2025 23:59	\$135.00	\$170.00	Glenn Griesbach 100%
196	33H08	14	1	51.45	2686749	4/11/2025 23:59	\$135.00	\$170.00	Glenn Griesbach 100%
197	33H08	14	2	51.45	2686750	4/11/2025 23:59	\$135.00	\$170.00	Glenn Griesbach 100%
198	33H08	14	3	51.45	2686751	4/11/2025 23:59	\$135.00	\$170.00	Glenn Griesbach 100%
199	33H08	14	4	51.45	2686752	4/11/2025 23:59	\$135.00	\$170.00	Glenn Griesbach 100%
200	33H07	3	36	51.55	2686753	4/11/2025 23:59	\$135.00	\$170.00	Junita Tedy Asihto 100%
201	33H07	3	38	51.55	2686754	4/11/2025 23:59	\$135.00	\$170.00	Junita Tedy Asihto 100%
202	33H07	3	39	51.55	2686755	4/11/2025 23:59	\$135.00	\$170.00	Junita Tedy Asihto 100%
203	33H07	3	40	51.55	2686756	4/11/2025 23:59	\$135.00	\$170.00	Junita Tedy Asihto 100%
204	33H07	3	41	51.55	2686757	4/11/2025 23:59	\$135.00	\$170.00	Junita Tedy Asihto 100%
205	33H07	3	42	51.55	2686758	4/11/2025 23:59	\$135.00	\$170.00	Junita Tedy Asihto 100%
206	33H07	3	43	51.55	2686759	4/11/2025 23:59	\$135.00	\$170.00	Junita Tedy Asihto 100%
207	33H07	3	44	51.55	2686760	4/11/2025 23:59	\$135.00	\$170.00	Junita Tedy Asihto 100%
208	33H07	4	36	51.54	2686761	4/11/2025 23:59	\$135.00	\$170.00	Junita Tedy Asihto 100%
209	33H07	4	37	51.54	2686762	4/11/2025 23:59	\$135.00	\$170.00	Junita Tedy Asihto 100%
210	33H07	4	38	51.54	2686763	4/11/2025 23:59	\$135.00	\$170.00	Junita Tedy Asihto 100%
211	33H07	4	39	51.54	2686764	4/11/2025 23:59	\$135.00	\$170.00	Junita Tedy Asihto 100%
212	33H07	4	40	51.54	2686765	4/11/2025 23:59	\$135.00	\$170.00	Junita Tedy Asihto 100%
213	33H07	4	41	51.54	2686766	4/11/2025 23:59	\$135.00	\$170.00	Junita Tedy Asihto 100%
214	33H07	4	42	51.54	2686767	4/11/2025 23:59	\$135.00	\$170.00	Junita Tedy Asihto 100%
215	33H07	4	43	51.54	2686768	4/11/2025 23:59	\$135.00	\$170.00	Junita Tedy Asihto 100%
216	33H07	4	44	51.54	2686769	4/11/2025 23:59	\$135.00	\$170.00	Junita Tedy Asihto 100%
217	33H07	4	45	51.54	2686770	4/11/2025 23:59	\$135.00	\$170.00	Junita Tedy Asihto 100%
218	33H07	5	36	51.53	2686771	4/11/2025 23:59	\$135.00	\$170.00	Junita Tedy Asihto 100%
219	33H07	5	37	51.53	2686772	4/11/2025 23:59	\$135.00	\$170.00	Junita Tedy Asihto 100%
220	33H07	5	38	51.53	2686773	4/11/2025 23:59	\$135.00	\$170.00	Junita Tedy Asihto 100%





#	NTS Map Sheet	Row	Column	Area (Ha.)	Title No (CDC)	Expiry Date	Work required to renew	Fees required to renew	Titleholder(s) name and Percentage
221	33H07	5	39	51.53	2686774	4/11/2025 23:59	\$135.00	\$170.00	Junita Tedy Asihto 100%
222	33H07	5	40	51.53	2686775	4/11/2025 23:59	\$135.00	\$170.00	Junita Tedy Asihto 100%
223	33H07	5	41	51.53	2686776	4/11/2025 23:59	\$135.00	\$170.00	Junita Tedy Asihto 100%
224	33H07	5	42	51.53	2686777	4/11/2025 23:59	\$135.00	\$170.00	Junita Tedy Asihto 100%
225	33H07	5	43	51.53	2686778	4/11/2025 23:59	\$135.00	\$170.00	Junita Tedy Asihto 100%
226	33H07	5	44	51.53	2686779	4/11/2025 23:59	\$135.00	\$170.00	Junita Tedy Asihto 100%
227	33H07	5	45	51.53	2686780	4/11/2025 23:59	\$135.00	\$170.00	Junita Tedy Asihto 100%
228	33H07	6	36	51.52	2686781	4/11/2025 23:59	\$135.00	\$170.00	Junita Tedy Asihto 100%
229	33H07	6	37	51.52	2686782	4/11/2025 23:59	\$135.00	\$170.00	Junita Tedy Asihto 100%
230	33H07	6	38	51.52	2686783	4/11/2025 23:59	\$135.00	\$170.00	Junita Tedy Asihto 100%
231	33H07	6	39	51.52	2686784	4/11/2025 23:59	\$135.00	\$170.00	Junita Tedy Asihto 100%
232	33H07	6	40	51.52	2686785	4/11/2025 23:59	\$135.00	\$170.00	Junita Tedy Asihto 100%
233	33H07	6	41	51.52	2686786	4/11/2025 23:59	\$135.00	\$170.00	Junita Tedy Asihto 100%
234	33H07	6	42	51.52	2686787	4/11/2025 23:59	\$135.00	\$170.00	Junita Tedy Asihto 100%
235	33H07	6	43	51.52	2686788	4/11/2025 23:59	\$135.00	\$170.00	Junita Tedy Asihto 100%
236	33H07	6	44	51.52	2686789	4/11/2025 23:59	\$135.00	\$170.00	Junita Tedy Asihto 100%
237	33H07	6	45	51.52	2686790	4/11/2025 23:59	\$135.00	\$170.00	Junita Tedy Asihto 100%
238	33H02	25	1	51.62	2686791	4/11/2025 23:59	\$135.00	\$170.00	Junita Tedy Asihto 100%
239	33H02	25	2	51.62	2686792	4/11/2025 23:59	\$135.00	\$170.00	Junita Tedy Asihto 100%
240	33H02	25	3	51.62	2686793	4/11/2025 23:59	\$135.00	\$170.00	Junita Tedy Asihto 100%
241	33H02	26	1	51.61	2686794	4/11/2025 23:59	\$135.00	\$170.00	Junita Tedy Asihto 100%
242	33H02	26	2	51.61	2686795	4/11/2025 23:59	\$135.00	\$170.00	Junita Tedy Asihto 100%
243	33H02	26	3	51.61	2686796	4/11/2025 23:59	\$135.00	\$170.00	Junita Tedy Asihto 100%
244	33H02	26	4	51.61	2686797	4/11/2025 23:59	\$135.00	\$170.00	Junita Tedy Asihto 100%
245	33H02	26	5	51.61	2686798	4/11/2025 23:59	\$135.00	\$170.00	Junita Tedy Asihto 100%
246	33H02	26	6	51.61	2686799	4/11/2025 23:59	\$135.00	\$170.00	Junita Tedy Asihto 100%
247	33H02	27	9	51.60	2686800	4/11/2025 23:59	\$135.00	\$170.00	Junita Tedy Asihto 100%
248	33H02	27	10	51.60	2686801	4/11/2025 23:59	\$135.00	\$170.00	Junita Tedy Asihto 100%
249	33H02	27	11	51.61	2686802	4/11/2025 23:59	\$135.00	\$170.00	Junita Tedy Asihto 100%
250	33H02	27	12	51.61	2686803	4/11/2025 23:59	\$135.00	\$170.00	Junita Tedy Asihto 100%
251	33H02	27	13	51.61	2686804	4/11/2025 23:59	\$135.00	\$170.00	Junita Tedy Asihto 100%
252	33H02	27	14	51.61	2686805	4/11/2025 23:59	\$135.00	\$170.00	Junita Tedy Asihto 100%
253	33H02	27	15	51.61	2686806	4/11/2025 23:59	\$135.00	\$170.00	Junita Tedy Asihto 100%
254	33H02	28	15	51.60	2686807	4/11/2025 23:59	\$135.00	\$170.00	Junita Tedy Asihto 100%
255	33H02	28	24	51.60	2686808	4/11/2025 23:59	\$135.00	\$170.00	Junita Tedy Asihto 100%
256	33H02	28	25	51.60	2686809	4/11/2025 23:59	\$135.00	\$170.00	Junita Tedy Asihto 100%
257	33H02	28	26	51.60	2686810	4/11/2025 23:59	\$135.00	\$170.00	Junita Tedy Asihto 100%



#	NTS Map Sheet	Row	Column	Area (Ha.)	Title No (CDC)	Expiry Date	Work required to renew	Fees required to renew	Titleholder(s) name and Percentage
258	33H02	29	24	51.59	2686811	4/11/2025 23:59	\$135.00	\$170.00	Junita Tedy Asihto 100%
259	33H02	29	25	51.59	2686812	4/11/2025 23:59	\$135.00	\$170.00	Junita Tedy Asihto 100%
260	33H02	29	26	51.59	2686813	4/11/2025 23:59	\$135.00	\$170.00	Junita Tedy Asihto 100%
261	33H02	29	27	51.59	2686814	4/11/2025 23:59	\$135.00	\$170.00	Junita Tedy Asihto 100%
262	33H02	29	28	51.59	2686815	4/11/2025 23:59	\$135.00	\$170.00	Junita Tedy Asihto 100%
263	33H02	29	29	51.59	2686816	4/11/2025 23:59	\$135.00	\$170.00	Junita Tedy Asihto 100%
264	33H02	29	30	51.59	2686817	4/11/2025 23:59	\$135.00	\$170.00	Junita Tedy Asihto 100%
265	33H02	29	31	51.59	2686818	4/11/2025 23:59	\$135.00	\$170.00	Junita Tedy Asihto 100%
266	33H02	29	32	51.59	2686819	4/11/2025 23:59	\$135.00	\$170.00	Junita Tedy Asihto 100%
267	33H02	29	33	51.59	2686820	4/11/2025 23:59	\$135.00	\$170.00	Junita Tedy Asihto 100%
268	33H02	29	34	51.59	2686821	4/11/2025 23:59	\$135.00	\$170.00	Junita Tedy Asihto 100%
269	33H02	30	27	51.58	2686822	4/11/2025 23:59	\$135.00	\$170.00	Junita Tedy Asihto 100%
270	33H02	30	28	51.58	2686823	4/11/2025 23:59	\$135.00	\$170.00	Junita Tedy Asihto 100%
271	33H02	30	29	51.58	2686824	4/11/2025 23:59	\$135.00	\$170.00	Junita Tedy Asihto 100%
272	33H02	30	30	51.58	2686825	4/11/2025 23:59	\$135.00	\$170.00	Junita Tedy Asihto 100%
273	33H02	30	31	51.58	2686826	4/11/2025 23:59	\$135.00	\$170.00	Junita Tedy Asihto 100%
274	33H02	30	32	51.58	2686827	4/11/2025 23:59	\$135.00	\$170.00	Junita Tedy Asihto 100%
275	33H02	30	33	51.58	2686828	4/11/2025 23:59	\$135.00	\$170.00	Junita Tedy Asihto 100%
276	33H02	30	34	51.58	2686829	4/11/2025 23:59	\$135.00	\$170.00	Junita Tedy Asihto 100%
277	33H07	1	12	51.57	2686830	4/11/2025 23:59	\$135.00	\$170.00	Junita Tedy Asihto 100%
278	33H07	2	1	51.55	2686831	4/11/2025 23:59	\$135.00	\$170.00	Junita Tedy Asihto 100%
279	33H07	2	2	51.55	2686832	4/11/2025 23:59	\$135.00	\$170.00	Junita Tedy Asihto 100%
280	33H07	2	3	51.55	2686833	4/11/2025 23:59	\$135.00	\$170.00	Junita Tedy Asihto 100%
281	33H07	2	4	51.55	2686834	4/11/2025 23:59	\$135.00	\$170.00	Junita Tedy Asihto 100%
282	33H07	2	5	51.55	2686835	4/11/2025 23:59	\$135.00	\$170.00	Junita Tedy Asihto 100%
283	33H07	2	6	51.55	2686836	4/11/2025 23:59	\$135.00	\$170.00	Junita Tedy Asihto 100%
284	33H07	2	7	51.55	2686837	4/11/2025 23:59	\$135.00	\$170.00	Junita Tedy Asihto 100%
285	33H07	2	8	51.55	2686838	4/11/2025 23:59	\$135.00	\$170.00	Junita Tedy Asihto 100%
286	33H07	2	9	51.56	2686839	4/11/2025 23:59	\$135.00	\$170.00	Junita Tedy Asihto 100%
287	33H07	2	10	51.56	2686840	4/11/2025 23:59	\$135.00	\$170.00	Junita Tedy Asihto 100%
288	33H07	2	11	51.56	2686841	4/11/2025 23:59	\$135.00	\$170.00	Junita Tedy Asihto 100%
289	33H07	2	12	51.56	2686842	4/11/2025 23:59	\$135.00	\$170.00	Junita Tedy Asihto 100%
290	33H07	2	24	51.56	2686843	4/11/2025 23:59	\$135.00	\$170.00	Junita Tedy Asihto 100%
291	33H07	2	25	51.56	2686844	4/11/2025 23:59	\$135.00	\$170.00	Junita Tedy Asihto 100%
292	33H07	2	26	51.56	2686845	4/11/2025 23:59	\$135.00	\$170.00	Junita Tedy Asihto 100%
293	33H07	2	27	51.56	2686846	4/11/2025 23:59	\$135.00	\$170.00	Junita Tedy Asihto 100%
294	33H07	2	28	51.56	2686847	4/11/2025 23:59	\$135.00	\$170.00	Junita Tedy Asihto 100%



#	NTS Map Sheet	Row	Column	Area (Ha.)	Title No (CDC)	Expiry Date	Work required to renew	Fees required to renew	Titleholder(s) name and Percentage
295	33H07	2	29	51.56	2686848	4/11/2025 23:59	\$135.00	\$170.00	Junita Tedy Asihto 100%
296	33H07	2	30	51.56	2686849	4/11/2025 23:59	\$135.00	\$170.00	Junita Tedy Asihto 100%
297	33H07	2	31	51.56	2686850	4/11/2025 23:59	\$135.00	\$170.00	Junita Tedy Asihto 100%
298	33H07	3	1	51.54	2686851	4/11/2025 23:59	\$135.00	\$170.00	Junita Tedy Asihto 100%
299	33H07	3	2	51.54	2686852	4/11/2025 23:59	\$135.00	\$170.00	Junita Tedy Asihto 100%
300	33H07	3	3	51.54	2686853	4/11/2025 23:59	\$135.00	\$170.00	Junita Tedy Asihto 100%
301	33H07	3	4	51.54	2686854	4/11/2025 23:59	\$135.00	\$170.00	Junita Tedy Asihto 100%
302	33H07	3	5	51.54	2686855	4/11/2025 23:59	\$135.00	\$170.00	Junita Tedy Asihto 100%
303	33H07	3	6	51.54	2686856	4/11/2025 23:59	\$135.00	\$170.00	Junita Tedy Asihto 100%
304	33H07	3	24	51.55	2686857	4/11/2025 23:59	\$135.00	\$170.00	Junita Tedy Asihto 100%
305	33H07	3	25	51.55	2686858	4/11/2025 23:59	\$135.00	\$170.00	Junita Tedy Asihto 100%
306	33H07	3	26	51.55	2686859	4/11/2025 23:59	\$135.00	\$170.00	Junita Tedy Asihto 100%
307	33H07	3	27	51.55	2686860	4/11/2025 23:59	\$135.00	\$170.00	Junita Tedy Asihto 100%
308	33H07	3	28	51.55	2686861	4/11/2025 23:59	\$135.00	\$170.00	Junita Tedy Asihto 100%
309	33H07	3	29	51.55	2686862	4/11/2025 23:59	\$135.00	\$170.00	Junita Tedy Asihto 100%
310	33H07	3	30	51.55	2686863	4/11/2025 23:59	\$135.00	\$170.00	Junita Tedy Asihto 100%
311	33H07	3	31	51.55	2686864	4/11/2025 23:59	\$135.00	\$170.00	Junita Tedy Asihto 100%
312	33H07	3	32	51.55	2686865	4/11/2025 23:59	\$135.00	\$170.00	Junita Tedy Asihto 100%
313	33H07	3	33	51.55	2686866	4/11/2025 23:59	\$135.00	\$170.00	Junita Tedy Asihto 100%
314	33H07	3	34	51.55	2686867	4/11/2025 23:59	\$135.00	\$170.00	Junita Tedy Asihto 100%
315	33H07	3	35	51.55	2686868	4/11/2025 23:59	\$135.00	\$170.00	Junita Tedy Asihto 100%
316	33H02	26	7	51.61	2686869	4/11/2025 23:59	\$135.00	\$170.00	Glenn Griesbach 100%
317	33H02	26	8	51.61	2686870	4/11/2025 23:59	\$135.00	\$170.00	Glenn Griesbach 100%
318	33H02	26	9	51.61	2686871	4/11/2025 23:59	\$135.00	\$170.00	Glenn Griesbach 100%
319	33H02	26	10	51.61	2686872	4/11/2025 23:59	\$135.00	\$170.00	Glenn Griesbach 100%
320	33H02	26	11	51.62	2686873	4/11/2025 23:59	\$135.00	\$170.00	Glenn Griesbach 100%
321	33H02	26	12	51.62	2686874	4/11/2025 23:59	\$135.00	\$170.00	Glenn Griesbach 100%
322	33H02	26	13	51.62	2686875	4/11/2025 23:59	\$135.00	\$170.00	Glenn Griesbach 100%
323	33H02	26	14	51.62	2686876	4/11/2025 23:59	\$135.00	\$170.00	Glenn Griesbach 100%
324	33H02	26	15	51.62	2686877	4/11/2025 23:59	\$135.00	\$170.00	Glenn Griesbach 100%
325	33H02	26	16	51.62	2686878	4/11/2025 23:59	\$135.00	\$170.00	Glenn Griesbach 100%
326	33H02	26	17	51.62	2686879	4/11/2025 23:59	\$135.00	\$170.00	Glenn Griesbach 100%
327	33H02	27	16	51.61	2686880	4/11/2025 23:59	\$135.00	\$170.00	Glenn Griesbach 100%
328	33H02	27	17	51.61	2686881	4/11/2025 23:59	\$135.00	\$170.00	Glenn Griesbach 100%
329	33H02	27	18	51.61	2686882	4/11/2025 23:59	\$135.00	\$170.00	Glenn Griesbach 100%
330	33H02	27	19	51.61	2686883	4/11/2025 23:59	\$135.00	\$170.00	Glenn Griesbach 100%
331	33H02	27	20	51.61	2686884	4/11/2025 23:59	\$135.00	\$170.00	Glenn Griesbach 100%



#	NTS Map Sheet	Row	Column	Area (Ha.)	Title No (CDC)	Expiry Date	Work required to renew	Fees required to renew	Titleholder(s) name and Percentage
332	33H02	27	21	51.61	2686885	4/11/2025 23:59	\$135.00	\$170.00	Glenn Griesbach 100%
333	33H02	27	22	51.61	2686886	4/11/2025 23:59	\$135.00	\$170.00	Glenn Griesbach 100%
334	33H02	27	23	51.61	2686887	4/11/2025 23:59	\$135.00	\$170.00	Glenn Griesbach 100%
335	33H02	27	24	51.61	2686888	4/11/2025 23:59	\$135.00	\$170.00	Glenn Griesbach 100%
336	33H02	27	25	51.61	2686889	4/11/2025 23:59	\$135.00	\$170.00	Glenn Griesbach 100%
337	33H02	27	26	51.61	2686890	4/11/2025 23:59	\$135.00	\$170.00	Glenn Griesbach 100%
338	33H02	28	16	51.60	2686891	4/11/2025 23:59	\$135.00	\$170.00	Glenn Griesbach 100%
339	33H02	28	17	51.60	2686892	4/11/2025 23:59	\$135.00	\$170.00	Glenn Griesbach 100%
340	33H02	28	18	51.60	2686893	4/11/2025 23:59	\$135.00	\$170.00	Glenn Griesbach 100%
341	33H02	28	19	51.60	2686894	4/11/2025 23:59	\$135.00	\$170.00	Glenn Griesbach 100%
342	33H02	28	20	51.60	2686895	4/11/2025 23:59	\$135.00	\$170.00	Glenn Griesbach 100%
343	33H02	28	21	51.60	2686896	4/11/2025 23:59	\$135.00	\$170.00	Glenn Griesbach 100%
344	33H02	28	22	51.60	2686897	4/11/2025 23:59	\$135.00	\$170.00	Glenn Griesbach 100%
345	33H02	28	23	51.60	2686898	4/11/2025 23:59	\$135.00	\$170.00	Glenn Griesbach 100%
346	33H02	29	15	51.59	2686899	4/11/2025 23:59	\$135.00	\$170.00	Glenn Griesbach 100%
347	33H02	29	16	51.59	2686900	4/11/2025 23:59	\$135.00	\$170.00	Glenn Griesbach 100%
348	33H02	29	17	51.59	2686901	4/11/2025 23:59	\$135.00	\$170.00	Glenn Griesbach 100%
349	33H02	29	18	51.59	2686902	4/11/2025 23:59	\$135.00	\$170.00	Glenn Griesbach 100%
350	33H02	29	19	51.59	2686903	4/11/2025 23:59	\$135.00	\$170.00	Glenn Griesbach 100%
351	33H02	29	20	51.59	2686904	4/11/2025 23:59	\$135.00	\$170.00	Glenn Griesbach 100%
352	33H02	29	21	51.59	2686905	4/11/2025 23:59	\$135.00	\$170.00	Glenn Griesbach 100%
353	33H02	29	22	51.59	2686906	4/11/2025 23:59	\$135.00	\$170.00	Glenn Griesbach 100%
354	33H02	29	23	51.59	2686907	4/11/2025 23:59	\$135.00	\$170.00	Glenn Griesbach 100%
355	33H07	1	13	51.57	2686908	4/11/2025 23:59	\$135.00	\$170.00	Glenn Griesbach 100%
356	33H07	1	14	51.57	2686909	4/11/2025 23:59	\$135.00	\$170.00	Glenn Griesbach 100%
357	33H07	1	15	51.57	2686910	4/11/2025 23:59	\$135.00	\$170.00	Glenn Griesbach 100%
358	33H07	1	16	51.57	2686911	4/11/2025 23:59	\$135.00	\$170.00	Glenn Griesbach 100%
359	33H07	1	17	51.57	2686912	4/11/2025 23:59	\$135.00	\$170.00	Glenn Griesbach 100%
360	33H07	1	18	51.57	2686913	4/11/2025 23:59	\$135.00	\$170.00	Glenn Griesbach 100%
361	33H07	1	19	51.57	2686914	4/11/2025 23:59	\$135.00	\$170.00	Glenn Griesbach 100%
362	33H07	1	20	51.57	2686915	4/11/2025 23:59	\$135.00	\$170.00	Glenn Griesbach 100%
363	33H07	1	21	51.57	2686916	4/11/2025 23:59	\$135.00	\$170.00	Glenn Griesbach 100%
364	33H07	1	22	51.57	2686917	4/11/2025 23:59	\$135.00	\$170.00	Glenn Griesbach 100%
365	33H07	1	23	51.57	2686918	4/11/2025 23:59	\$135.00	\$170.00	Glenn Griesbach 100%
366	33H07	2	13	51.56	2686919	4/11/2025 23:59	\$135.00	\$170.00	Glenn Griesbach 100%
367	33H07	2	14	51.56	2686920	4/11/2025 23:59	\$135.00	\$170.00	Glenn Griesbach 100%
368	33H07	2	15	51.56	2686921	4/11/2025 23:59	\$135.00	\$170.00	Glenn Griesbach 100%



#	NTS Map Sheet	Row	Column	Area (Ha.)	Title No (CDC)	Expiry Date	Work required to renew	Fees required to renew	Titleholder(s) name and Percentage
369	33H07	2	16	51.56	2686922	4/11/2025 23:59	\$135.00	\$170.00	Glenn Griesbach 100%
370	33H07	2	17	51.56	2686923	4/11/2025 23:59	\$135.00	\$170.00	Glenn Griesbach 100%
371	33H07	2	18	51.56	2686924	4/11/2025 23:59	\$135.00	\$170.00	Glenn Griesbach 100%
372	33H07	2	19	51.56	2686925	4/11/2025 23:59	\$135.00	\$170.00	Glenn Griesbach 100%
373	33H07	2	20	51.56	2686926	4/11/2025 23:59	\$135.00	\$170.00	Glenn Griesbach 100%
374	33H07	2	21	51.56	2686927	4/11/2025 23:59	\$135.00	\$170.00	Glenn Griesbach 100%
375	33H07	2	22	51.56	2686928	4/11/2025 23:59	\$135.00	\$170.00	Glenn Griesbach 100%
376	33H07	2	23	51.56	2686929	4/11/2025 23:59	\$135.00	\$170.00	Glenn Griesbach 100%
377	33H07	3	7	51.54	2686930	4/11/2025 23:59	\$135.00	\$170.00	Glenn Griesbach 100%
378	33H07	3	8	51.54	2686931	4/11/2025 23:59	\$135.00	\$170.00	Glenn Griesbach 100%
379	33H07	3	9	51.55	2686932	4/11/2025 23:59	\$135.00	\$170.00	Glenn Griesbach 100%
380	33H07	3	10	51.55	2686933	4/11/2025 23:59	\$135.00	\$170.00	Glenn Griesbach 100%
381	33H07	3	11	51.55	2686934	4/11/2025 23:59	\$135.00	\$170.00	Glenn Griesbach 100%
382	33H07	3	12	51.55	2686935	4/11/2025 23:59	\$135.00	\$170.00	Glenn Griesbach 100%
383	33H07	3	13	51.55	2686936	4/11/2025 23:59	\$135.00	\$170.00	Glenn Griesbach 100%
384	33H07	3	14	51.55	2686937	4/11/2025 23:59	\$135.00	\$170.00	Glenn Griesbach 100%
385	33H07	3	15	51.55	2686938	4/11/2025 23:59	\$135.00	\$170.00	Glenn Griesbach 100%
386	33H07	3	16	51.55	2686939	4/11/2025 23:59	\$135.00	\$170.00	Glenn Griesbach 100%
387	33H07	3	17	51.55	2686940	4/11/2025 23:59	\$135.00	\$170.00	Glenn Griesbach 100%
388	33H07	3	18	51.55	2686941	4/11/2025 23:59	\$135.00	\$170.00	Glenn Griesbach 100%
389	33H07	3	19	51.55	2686942	4/11/2025 23:59	\$135.00	\$170.00	Glenn Griesbach 100%
390	33H07	3	20	51.55	2686943	4/11/2025 23:59	\$135.00	\$170.00	Glenn Griesbach 100%
391	33H07	3	21	51.55	2686944	4/11/2025 23:59	\$135.00	\$170.00	Glenn Griesbach 100%
392	33H07	3	22	51.55	2686945	4/11/2025 23:59	\$135.00	\$170.00	Glenn Griesbach 100%
393	33H07	3	23	51.55	2686946	4/11/2025 23:59	\$135.00	\$170.00	Glenn Griesbach 100%
394	33H02	24	13	51.64	2686949	5/11/2025 23:59	\$135.00	\$170.00	Junita Tedy Asihto 100%
395	33H02	24	14	51.64	2686950	5/11/2025 23:59	\$135.00	\$170.00	Junita Tedy Asihto 100%
396	33H02	24	15	51.64	2686951	5/11/2025 23:59	\$135.00	\$170.00	Junita Tedy Asihto 100%
397	33H02	24	16	51.64	2686952	5/11/2025 23:59	\$135.00	\$170.00	Junita Tedy Asihto 100%
398	33H02	24	17	51.64	2686953	5/11/2025 23:59	\$135.00	\$170.00	Junita Tedy Asihto 100%
399	33H02	24	18	51.64	2686954	5/11/2025 23:59	\$135.00	\$170.00	Junita Tedy Asihto 100%
400	33H02	24	19	51.64	2686955	5/11/2025 23:59	\$135.00	\$170.00	Junita Tedy Asihto 100%
401	33H02	24	20	51.64	2686956	5/11/2025 23:59	\$135.00	\$170.00	Junita Tedy Asihto 100%
402	33H02	25	10	51.62	2686957	5/11/2025 23:59	\$135.00	\$170.00	Junita Tedy Asihto 100%
403	33H02	25	11	51.63	2686958	5/11/2025 23:59	\$135.00	\$170.00	Junita Tedy Asihto 100%
404	33H02	25	12	51.63	2686959	5/11/2025 23:59	\$135.00	\$170.00	Junita Tedy Asihto 100%
405	33H02	25	13	51.63	2686960	5/11/2025 23:59	\$135.00	\$170.00	Junita Tedy Asihto 100%



#	NTS Map Sheet	Row	Column	Area (Ha.)	Title No (CDC)	Expiry Date	Work required to renew	Fees required to renew	Titleholder(s) name and Percentage
406	33H02	25	14	51.63	2686961	5/11/2025 23:59	\$135.00	\$170.00	Junita Tedy Asihto 100%
407	33H02	25	15	51.63	2686962	5/11/2025 23:59	\$135.00	\$170.00	Junita Tedy Asihto 100%
408	33H02	25	16	51.63	2686963	5/11/2025 23:59	\$135.00	\$170.00	Junita Tedy Asihto 100%
409	33H02	25	17	51.63	2686964	5/11/2025 23:59	\$135.00	\$170.00	Junita Tedy Asihto 100%
410	33H02	25	18	51.63	2686965	5/11/2025 23:59	\$135.00	\$170.00	Junita Tedy Asihto 100%
411	33H02	25	19	51.63	2686966	5/11/2025 23:59	\$135.00	\$170.00	Junita Tedy Asihto 100%
412	33H02	25	20	51.63	2686967	5/11/2025 23:59	\$135.00	\$170.00	Junita Tedy Asihto 100%
413	33H02	25	21	51.63	2686968	5/11/2025 23:59	\$135.00	\$170.00	Junita Tedy Asihto 100%
414	33H02	25	22	51.63	2686969	5/11/2025 23:59	\$135.00	\$170.00	Junita Tedy Asihto 100%
415	33H02	25	23	51.63	2686970	5/11/2025 23:59	\$135.00	\$170.00	Junita Tedy Asihto 100%
416	33H02	25	24	51.63	2686971	5/11/2025 23:59	\$135.00	\$170.00	Junita Tedy Asihto 100%
417	33H02	25	25	51.63	2686972	5/11/2025 23:59	\$135.00	\$170.00	Junita Tedy Asihto 100%
418	33H02	25	26	51.63	2686973	5/11/2025 23:59	\$135.00	\$170.00	Junita Tedy Asihto 100%
419	33H02	25	27	51.63	2686974	5/11/2025 23:59	\$135.00	\$170.00	Junita Tedy Asihto 100%
420	33H02	25	28	51.63	2686975	5/11/2025 23:59	\$135.00	\$170.00	Junita Tedy Asihto 100%
421	33H02	25	29	51.63	2686976	5/11/2025 23:59	\$135.00	\$170.00	Junita Tedy Asihto 100%
422	33H02	26	18	51.62	2686977	5/11/2025 23:59	\$135.00	\$170.00	Junita Tedy Asihto 100%
423	33H02	26	19	51.62	2686978	5/11/2025 23:59	\$135.00	\$170.00	Junita Tedy Asihto 100%
424	33H02	26	20	51.62	2686979	5/11/2025 23:59	\$135.00	\$170.00	Junita Tedy Asihto 100%
425	33H02	26	21	51.62	2686980	5/11/2025 23:59	\$135.00	\$170.00	Junita Tedy Asihto 100%
426	33H02	26	22	51.62	2686981	5/11/2025 23:59	\$135.00	\$170.00	Junita Tedy Asihto 100%
427	33H02	26	23	51.62	2686982	5/11/2025 23:59	\$135.00	\$170.00	Junita Tedy Asihto 100%
428	33H02	26	24	51.62	2686983	5/11/2025 23:59	\$135.00	\$170.00	Junita Tedy Asihto 100%
429	33H02	26	25	51.62	2686984	5/11/2025 23:59	\$135.00	\$170.00	Junita Tedy Asihto 100%
430	33H02	26	26	51.62	2686985	5/11/2025 23:59	\$135.00	\$170.00	Junita Tedy Asihto 100%
431	33H07	8	49	51.50	2687003	6/11/2025 23:59	\$135.00	\$170.00	Glenn Griesbach 100%
432	33H07	8	50	51.50	2687004	6/11/2025 23:59	\$135.00	\$170.00	Glenn Griesbach 100%
433	33H07	8	51	51.50	2687005	6/11/2025 23:59	\$135.00	\$170.00	Glenn Griesbach 100%
434	33H07	8	52	51.50	2687006	6/11/2025 23:59	\$135.00	\$170.00	Glenn Griesbach 100%
435	33H07	8	53	51.50	2687007	6/11/2025 23:59	\$135.00	\$170.00	Glenn Griesbach 100%
436	33H07	8	54	51.50	2687008	6/11/2025 23:59	\$135.00	\$170.00	Glenn Griesbach 100%
437	33H07	9	49	51.49	2687009	6/11/2025 23:59	\$135.00	\$170.00	Glenn Griesbach 100%
438	33H07	9	50	51.49	2687010	6/11/2025 23:59	\$135.00	\$170.00	Glenn Griesbach 100%
439	33H07	9	51	51.49	2687011	6/11/2025 23:59	\$135.00	\$170.00	Glenn Griesbach 100%
440	33H07	9	52	51.49	2687012	6/11/2025 23:59	\$135.00	\$170.00	Glenn Griesbach 100%
441	33H07	9	53	51.49	2687013	6/11/2025 23:59	\$135.00	\$170.00	Glenn Griesbach 100%
442	33H07	9	54	51.49	2687014	6/11/2025 23:59	\$135.00	\$170.00	Glenn Griesbach 100%



#	NTS Map Sheet	Row	Column	Area (Ha.)	Title No (CDC)	Expiry Date	Work required to renew	Fees required to renew	Titleholder(s) name and Percentage
443	33H07	9	55	51.50	2687015	6/11/2025 23:59	\$135.00	\$170.00	Glenn Griesbach 100%
444	33H07	9	56	51.50	2687016	6/11/2025 23:59	\$135.00	\$170.00	Glenn Griesbach 100%
445	33H07	9	57	51.50	2687017	6/11/2025 23:59	\$135.00	\$170.00	Glenn Griesbach 100%
446	33H07	9	58	51.50	2687018	6/11/2025 23:59	\$135.00	\$170.00	Glenn Griesbach 100%
447	33H07	10	49	51.48	2687019	6/11/2025 23:59	\$135.00	\$170.00	Glenn Griesbach 100%
448	33H07	10	50	51.48	2687020	6/11/2025 23:59	\$135.00	\$170.00	Glenn Griesbach 100%
449	33H07	10	51	51.48	2687021	6/11/2025 23:59	\$135.00	\$170.00	Glenn Griesbach 100%
450	33H07	11	49	51.47	2687022	6/11/2025 23:59	\$135.00	\$170.00	Glenn Griesbach 100%
451	33H07	11	50	51.47	2687023	6/11/2025 23:59	\$135.00	\$170.00	Glenn Griesbach 100%
452	33H07	11	51	51.47	2687024	6/11/2025 23:59	\$135.00	\$170.00	Glenn Griesbach 100%
453	33H07	12	50	51.46	2687025	6/11/2025 23:59	\$135.00	\$170.00	Glenn Griesbach 100%
454	33H07	12	51	51.46	2687026	6/11/2025 23:59	\$135.00	\$170.00	Glenn Griesbach 100%
455	33H07	13	51	51.45	2687027	6/11/2025 23:59	\$135.00	\$170.00	Glenn Griesbach 100%
456	33H08	14	5	51.45	2687112	6/11/2025 23:59	\$135.00	\$170.00	Glenn Griesbach 100%
457	33H08	14	6	51.45	2687113	6/11/2025 23:59	\$135.00	\$170.00	Glenn Griesbach 100%
458	33H08	14	7	51.45	2687114	6/11/2025 23:59	\$135.00	\$170.00	Glenn Griesbach 100%
459	33H08	14	8	51.45	2687115	6/11/2025 23:59	\$135.00	\$170.00	Glenn Griesbach 100%
460	33H08	14	9	51.45	2687116	6/11/2025 23:59	\$135.00	\$170.00	Glenn Griesbach 100%
461	33H08	14	10	51.45	2687117	6/11/2025 23:59	\$135.00	\$170.00	Glenn Griesbach 100%
462	33H08	14	11	51.45	2687118	6/11/2025 23:59	\$135.00	\$170.00	Glenn Griesbach 100%
463	33H08	14	12	51.45	2687119	6/11/2025 23:59	\$135.00	\$170.00	Glenn Griesbach 100%
464	33H08	14	13	51.45	2687120	6/11/2025 23:59	\$135.00	\$170.00	Glenn Griesbach 100%
465	33H08	14	14	51.45	2687121	6/11/2025 23:59	\$135.00	\$170.00	Glenn Griesbach 100%
466	33H08	14	15	51.45	2687122	6/11/2025 23:59	\$135.00	\$170.00	Glenn Griesbach 100%
467	33H08	14	16	51.45	2687123	6/11/2025 23:59	\$135.00	\$170.00	Glenn Griesbach 100%
468	33H08	14	17	51.45	2687124	6/11/2025 23:59	\$135.00	\$170.00	Glenn Griesbach 100%
469	33H08	14	18	51.45	2687125	6/11/2025 23:59	\$135.00	\$170.00	Glenn Griesbach 100%
470	33H08	14	19	51.45	2687126	6/11/2025 23:59	\$135.00	\$170.00	Glenn Griesbach 100%
471	33H08	14	20	51.45	2687127	6/11/2025 23:59	\$135.00	\$170.00	Glenn Griesbach 100%
472	33H08	14	21	51.45	2687128	6/11/2025 23:59	\$135.00	\$170.00	Glenn Griesbach 100%
473	33H08	14	22	51.45	2687129	6/11/2025 23:59	\$135.00	\$170.00	Glenn Griesbach 100%
474	33H08	14	23	51.45	2687130	6/11/2025 23:59	\$135.00	\$170.00	Glenn Griesbach 100%
475	33H08	10	24	51.49	2687131	6/11/2025 23:59	\$135.00	\$170.00	Junita Tedy Asihto 100%
476	33H08	10	25	51.49	2687132	6/11/2025 23:59	\$135.00	\$170.00	Junita Tedy Asihto 100%
477	33H08	10	26	51.49	2687133	6/11/2025 23:59	\$135.00	\$170.00	Junita Tedy Asihto 100%
478	33H08	10	27	51.49	2687134	6/11/2025 23:59	\$135.00	\$170.00	Junita Tedy Asihto 100%
479	33H08	10	28	51.49	2687135	6/11/2025 23:59	\$135.00	\$170.00	Junita Tedy Asihto 100%



#	NTS Map Sheet	Row	Column	Area (Ha.)	Title No (CDC)	Expiry Date	Work required to renew	Fees required to renew	Titleholder(s) name and Percentage
480	33H08	10	29	51.49	2687136	6/11/2025 23:59	\$135.00	\$170.00	Junita Tedy Asihto 100%
481	33H08	10	30	51.49	2687137	6/11/2025 23:59	\$135.00	\$170.00	Junita Tedy Asihto 100%
482	33H08	10	31	51.49	2687138	6/11/2025 23:59	\$135.00	\$170.00	Junita Tedy Asihto 100%
483	33H08	10	32	51.49	2687139	6/11/2025 23:59	\$135.00	\$170.00	Junita Tedy Asihto 100%
484	33H08	10	33	51.49	2687140	6/11/2025 23:59	\$135.00	\$170.00	Junita Tedy Asihto 100%
485	33H08	11	24	51.48	2687141	6/11/2025 23:59	\$135.00	\$170.00	Junita Tedy Asihto 100%
486	33H08	11	25	51.48	2687142	6/11/2025 23:59	\$135.00	\$170.00	Junita Tedy Asihto 100%
487	33H08	11	26	51.48	2687143	6/11/2025 23:59	\$135.00	\$170.00	Junita Tedy Asihto 100%
488	33H08	11	27	51.48	2687144	6/11/2025 23:59	\$135.00	\$170.00	Junita Tedy Asihto 100%
489	33H08	11	28	51.48	2687145	6/11/2025 23:59	\$135.00	\$170.00	Junita Tedy Asihto 100%
490	33H08	11	29	51.48	2687146	6/11/2025 23:59	\$135.00	\$170.00	Junita Tedy Asihto 100%
491	33H08	11	30	51.48	2687147	6/11/2025 23:59	\$135.00	\$170.00	Junita Tedy Asihto 100%
492	33H08	11	31	51.48	2687148	6/11/2025 23:59	\$135.00	\$170.00	Junita Tedy Asihto 100%
493	33H08	11	32	51.48	2687149	6/11/2025 23:59	\$135.00	\$170.00	Junita Tedy Asihto 100%
494	33H08	11	33	51.48	2687150	6/11/2025 23:59	\$135.00	\$170.00	Junita Tedy Asihto 100%
495	33H08	12	14	51.47	2687335	8/11/2025 23:59	\$135.00	\$170.00	Glenn Griesbach 100%
496	33H08	12	15	51.47	2687336	8/11/2025 23:59	\$135.00	\$170.00	Glenn Griesbach 100%
497	33H08	12	16	51.47	2687337	8/11/2025 23:59	\$135.00	\$170.00	Glenn Griesbach 100%
498	33H08	12	17	51.47	2687338	8/11/2025 23:59	\$135.00	\$170.00	Glenn Griesbach 100%
499	33H08	12	18	51.47	2687339	8/11/2025 23:59	\$135.00	\$170.00	Glenn Griesbach 100%
500	33H08	12	19	51.47	2687340	8/11/2025 23:59	\$135.00	\$170.00	Glenn Griesbach 100%
501	33H08	12	20	51.47	2687341	8/11/2025 23:59	\$135.00	\$170.00	Glenn Griesbach 100%
502	33H08	12	21	51.47	2687342	8/11/2025 23:59	\$135.00	\$170.00	Glenn Griesbach 100%
503	33H08	12	22	51.47	2687343	8/11/2025 23:59	\$135.00	\$170.00	Glenn Griesbach 100%
504	33H08	12	23	51.47	2687344	8/11/2025 23:59	\$135.00	\$170.00	Glenn Griesbach 100%
505	33H08	13	14	51.46	2687345	8/11/2025 23:59	\$135.00	\$170.00	Glenn Griesbach 100%
506	33H08	13	15	51.46	2687346	8/11/2025 23:59	\$135.00	\$170.00	Glenn Griesbach 100%
507	33H08	13	16	51.46	2687347	8/11/2025 23:59	\$135.00	\$170.00	Glenn Griesbach 100%
508	33H08	13	17	51.46	2687348	8/11/2025 23:59	\$135.00	\$170.00	Glenn Griesbach 100%
509	33H08	13	18	51.46	2687349	8/11/2025 23:59	\$135.00	\$170.00	Glenn Griesbach 100%
510	33H08	13	19	51.46	2687350	8/11/2025 23:59	\$135.00	\$170.00	Glenn Griesbach 100%
511	33H08	13	20	51.46	2687351	8/11/2025 23:59	\$135.00	\$170.00	Glenn Griesbach 100%
512	33H08	13	21	51.46	2687352	8/11/2025 23:59	\$135.00	\$170.00	Glenn Griesbach 100%
513	33H08	13	22	51.46	2687353	8/11/2025 23:59	\$135.00	\$170.00	Glenn Griesbach 100%
514	33H08	13	23	51.46	2687354	8/11/2025 23:59	\$135.00	\$170.00	Glenn Griesbach 100%
515	33H08	9	21	51.50	2687355	8/11/2025 23:59	\$135.00	\$170.00	Junita Tedy Asihto 100%
516	33H08	9	22	51.50	2687356	8/11/2025 23:59	\$135.00	\$170.00	Junita Tedy Asihto 100%





#	NTS Map Sheet	Row	Column	Area (Ha.)	Title No (CDC)	Expiry Date	Work required to renew	Fees required to renew	Titleholder(s) name and Percentage
517	33H08	9	23	51.50	2687357	8/11/2025 23:59	\$135.00	\$170.00	Junita Tedy Asihto 100%
518	33H08	9	24	51.50	2687358	8/11/2025 23:59	\$135.00	\$170.00	Junita Tedy Asihto 100%
519	33H08	9	25	51.50	2687359	8/11/2025 23:59	\$135.00	\$170.00	Junita Tedy Asihto 100%
520	33H08	9	26	51.50	2687360	8/11/2025 23:59	\$135.00	\$170.00	Junita Tedy Asihto 100%
521	33H08	9	27	51.50	2687361	8/11/2025 23:59	\$135.00	\$170.00	Junita Tedy Asihto 100%
522	33H08	9	28	51.50	2687362	8/11/2025 23:59	\$135.00	\$170.00	Junita Tedy Asihto 100%
523	33H08	9	29	51.50	2687363	8/11/2025 23:59	\$135.00	\$170.00	Junita Tedy Asihto 100%
524	33H08	9	30	51.50	2687364	8/11/2025 23:59	\$135.00	\$170.00	Junita Tedy Asihto 100%
525	33H08	9	31	51.50	2687365	8/11/2025 23:59	\$135.00	\$170.00	Junita Tedy Asihto 100%
526	33H08	9	32	51.50	2687366	8/11/2025 23:59	\$135.00	\$170.00	Junita Tedy Asihto 100%
527	33H08	9	33	51.50	2687367	8/11/2025 23:59	\$135.00	\$170.00	Junita Tedy Asihto 100%
528	33H08	10	21	51.49	2687368	8/11/2025 23:59	\$135.00	\$170.00	Junita Tedy Asihto 100%
529	33H08	10	22	51.49	2687369	8/11/2025 23:59	\$135.00	\$170.00	Junita Tedy Asihto 100%
530	33H08	10	23	51.49	2687370	8/11/2025 23:59	\$135.00	\$170.00	Junita Tedy Asihto 100%
531	33H08	11	21	51.48	2687371	8/11/2025 23:59	\$135.00	\$170.00	Junita Tedy Asihto 100%
532	33H08	11	22	51.48	2687372	8/11/2025 23:59	\$135.00	\$170.00	Junita Tedy Asihto 100%
533	33H08	11	23	51.48	2687373	8/11/2025 23:59	\$135.00	\$170.00	Junita Tedy Asihto 100%
534	33H07	7	42	51.51	2687936	10/11/2025 23:59	\$135.00	\$170.00	Glenn Griesbach 100%
535	33H07	7	43	51.51	2687937	10/11/2025 23:59	\$135.00	\$170.00	Glenn Griesbach 100%
536	33H07	7	44	51.51	2687938	10/11/2025 23:59	\$135.00	\$170.00	Glenn Griesbach 100%
537	33H07	7	45	51.51	2687939	10/11/2025 23:59	\$135.00	\$170.00	Glenn Griesbach 100%
538	33H07	8	42	51.50	2687940	10/11/2025 23:59	\$135.00	\$170.00	Glenn Griesbach 100%
539	33H07	8	43	51.50	2687941	10/11/2025 23:59	\$135.00	\$170.00	Glenn Griesbach 100%
540	33H07	8	44	51.50	2687942	10/11/2025 23:59	\$135.00	\$170.00	Glenn Griesbach 100%
541	33H07	8	45	51.50	2687943	10/11/2025 23:59	\$135.00	\$170.00	Glenn Griesbach 100%
542	33H07	9	43	51.49	2687944	10/11/2025 23:59	\$135.00	\$170.00	Glenn Griesbach 100%
543	33H07	9	44	51.49	2687945	10/11/2025 23:59	\$135.00	\$170.00	Glenn Griesbach 100%
544	33H07	9	45	51.49	2687946	10/11/2025 23:59	\$135.00	\$170.00	Glenn Griesbach 100%
545	33H07	10	45	51.48	2688263	12/11/2025 23:59	\$135.00	\$170.00	Glenn Griesbach 100%
546	33H07	11	45	51.47	2688264	12/11/2025 23:59	\$135.00	\$170.00	Glenn Griesbach 100%
547	33H07	12	45	51.46	2688265	12/11/2025 23:59	\$135.00	\$170.00	Glenn Griesbach 100%
548	33H07	12	46	51.46	2688266	12/11/2025 23:59	\$135.00	\$170.00	Glenn Griesbach 100%
549	33H07	12	47	51.46	2688267	12/11/2025 23:59	\$135.00	\$170.00	Glenn Griesbach 100%
550	33H07	13	45	51.45	2688268	12/11/2025 23:59	\$135.00	\$170.00	Glenn Griesbach 100%
551	33H07	13	46	51.45	2688269	12/11/2025 23:59	\$135.00	\$170.00	Glenn Griesbach 100%
552	33H07	13	47	51.45	2688270	12/11/2025 23:59	\$135.00	\$170.00	Glenn Griesbach 100%
553	33H07	13	48	51.45	2688271	12/11/2025 23:59	\$135.00	\$170.00	Glenn Griesbach 100%



#	NTS Map Sheet	Row	Column	Area (Ha.)	Title No (CDC)	Expiry Date	Work required to renew	Fees required to renew	Titleholder(s) name and Percentage
554	33H07	14	45	51.44	<b>2688272</b>	12/11/2025 23:59	\$135.00	\$170.00	Glenn Griesbach 100%
555	33H07	14	46	51.44	<b>2688273</b>	12/11/2025 23:59	\$135.00	\$170.00	Glenn Griesbach 100%
556	33H07	14	47	51.44	<b>2688274</b>	12/11/2025 23:59	\$135.00	\$170.00	Glenn Griesbach 100%
557	33H07	14	48	51.44	<b>2688275</b>	12/11/2025 23:59	\$135.00	\$170.00	Glenn Griesbach 100%
558	33H07	14	49	51.44	<b>2688276</b>	12/11/2025 23:59	\$135.00	\$170.00	Glenn Griesbach 100%